

# 050-649

## Novell

### TCP IP for Networking Professionals

*OfficialCerts.com is a reputable IT certification examination guide, study guides and audio exam provider. We ensure that you pass your 050-649 exam in first attempt and also get high scores to acquire Novell certification.*

*If you use OfficialCerts 050-649 Certification questions and answers, you will experience actual 050-649 exam questions/answers. We know exactly what is needed and have all the exam preparation material required to pass the exam. Our Novell exam prep covers over 95% of the questions and answers that may be appeared in your 050-649 exam. Every point from pass4sure 050-649 PDF, 050-649 review will help you take Novell 050-649 exam much easier and become Novell certified.*

*Here's what you can expect from the OfficialCerts Novell 050-649 course:*

- \* Up-to-Date Novell 050-649 questions as experienced in the real exam.*
- \* 100% correct Novell 050-649 answers you simply can't find in other 050-649 courses.*
- \* All of our tests are easy to download. Your file will be saved as a 050-649 PDF.*
- \* Novell 050-649 brain dump free content featuring the real 050-649 test questions.*

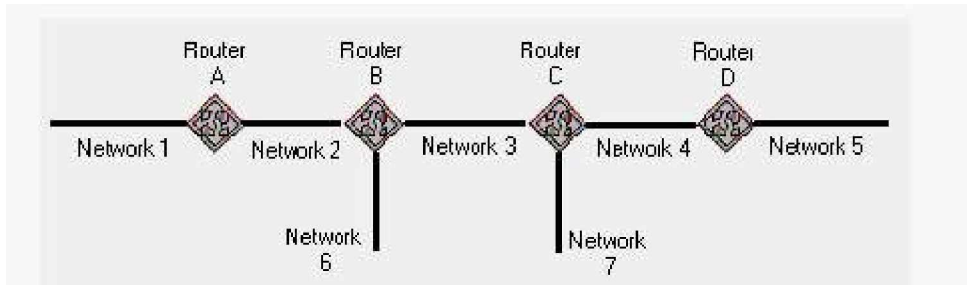
*Novell 050-649 certification exam is of core importance both in your Professional life and Novell certification path. With Novell certification you can get a good job easily in the market and get on your path for success. Professionals who passed Novell 050-649 exam training are an absolute favorite in the industry. You will pass Novell 050-649 certification test and career opportunities will be open for you.*

<http://tripleamarine.com/?cert=exams.asp?examcode=050-649>



**QUESTION: 1**

Examine the graphic below. Router C uses RIP and has split horizon enabled. Which cost metric does Router C advertise on Network 3 regarding Network 6?



- A. 2
- B. 3
- C. 4
- D. 15
- E. 16
- F. Router C does not advertise routes for Network 6 over Network 3.

**Answer: F**

**QUESTION: 2**

What does TFTP use to maintain data packet order?

- A. Pointers
- B. Sequence numbers
- C. Acknowledgements
- D. Fixed-length packets
- E. A single data packet

**Answer: C**

**QUESTION: 3**

What TCP/IP protocol allows users to remotely access a system as if they were directly connected to the remote machine? (Enter the acronym only.)

**Answer: TELNET**

**QUESTION: 4**

Perform the drag-and-drop task. Begin by clicking the Drag-and-Drop button. When you

finish, continue to the next question by clicking the Next button. The graphic shows the steps for data exchange between a server and a requesting client application using the TCP protocol. Two steps are already in place. Arrange the remaining steps in the correct order by dragging each step to the correct location.

Steps	Order
TCP uses the sequence numbers to reorder and combine the datagrams.	The server sends the data to the requesting application.
TCP splits the data stream into segments.	Place step 2 here
IP header information is removed and the IP datagrams are passed to TCP.	Place step 3 here
TCP acknowledges receipt of each datagram.	Place step 4 here
The logical addresses for the source and destination are added to each segment.	Place step 5 here
The client data link layer receives frames and passes its data to the IP layer.	Place step 6 here
	Place step 7 here
	The data is received by the requesting application.

**Answer:**

Steps	Order
TCP uses the sequence numbers to reorder and combine the datagrams.	The server sends the data to the requesting application.
TCP splits the data stream into segments.	TCP splits the data stream into segments.
IP header information is removed and the IP datagrams are passed to TCP.	The logical addresses for the source and destination are added to each segment.
TCP acknowledges receipt of each datagram.	The client data link layer receives frames and passes its data to the IP layer.
The logical addresses for the source and destination are added to each segment.	IP header information is removed and the IP datagrams are passed to TCP.
The client data link layer receives frames and passes its data to the IP layer.	TCP acknowledges receipt of each datagram.
	TCP uses the sequence numbers to reorder and combine the datagrams.
	The data is received by the requesting application.

**QUESTION: 5**

How many keys are used for public-key encryption? (Enter a number.)

**Answer:** 2

**QUESTION:** 6

Which mechanisms can be used to obtain a dynamic IP address? (Choose 3.)

- A. DNS
- B. ARP
- C. DHCP
- D. RARP
- E. ICMP
- F. PING
- G. BOOTP

**Answer:** C, D, G

**QUESTION:** 7

What symptom can occur on a network when clients are configured with an incorrect subnet mask?

- A. Clients ARP for remote devices.
- B. Dynamic route entries are added unnecessarily.
- C. Clients cannot obtain an IP address using DHCP.
- D. Routers send ICMP port unreachable messages for remote devices.

**Answer:** A

**QUESTION:** 8

Which steps are part of the TCP/IP error resolution process? (Choose 2.)

- A. List all operating systems in use.
- B. Examine the communication process.
- C. Begin capturing all network packets.
- D. Identify the possible points of failure.

**Answer:** B, D

**QUESTION: 9**

Your company uses the IP address 168.212.0.0 with subnets 168.212.64.0 and 68.212.128.0. What is the appropriate subnet mask for your company?

- A. 255.255.0.0
- B. 255.255.128.0
- C. 255.255.192.0
- D. 255.255.224.0
- E. 255.255.255.0
- F. 255.255.255.128
- G. 255.255.255.192
- H. 255.255.255.224

**Answer: C**

**QUESTION: 10**

Which tool do you use to determine active processes on a host?

- A. ROUTE
- B. PING/TPING
- C. TRACEROUTE
- D. Port scanner

**Answer: D**

**QUESTION: 11**

When do RIP routers advertise their routing information?

- A. Every 30 seconds
- B. Every 60 seconds
- C. Anytime a change occurs
- D. When a request for information is received

**Answer: A**

**QUESTION: 12**

Which routing configuration provides a method for explicitly defining the next hop from a router to a particular destination?

- A. Static
- B. Dynamic
- C. Directed
- D. Link state
- E. Distance vector

**Answer:** A

**QUESTION:** 13

What class of IP address is shown below? 33.4.71.222

- A. Class A
- B. Class B
- C. Class C
- D. Class D
- E. Class E

**Answer:** D

**QUESTION:** 14

How often does an OSPF router rebuild its routing table information?

- A. Every 30 seconds
- B. Every 60 seconds
- C. Every five minutes
- D. Every hour
- E. At a predetermined interval
- F. Only when a change occurs

**Answer:** F

**QUESTION:** 15

Examine the graphic below.

Router B uses RIP and has poison reverse enabled. Which cost metric does Router B advertise on Network 2 regarding Network 7?



## OfficialCerts.com Certification Exam Full Version Features;

- Verified answers researched by industry experts.
- Exams **updated** on regular basis.
- Questions, Answers are downloadable in **PDF** format.
- **No authorization** code required to open exam.
- **Portable** anywhere.
- 100% success **Guarantee**.
- **Fast**, helpful support 24x7.

View list of All exams we offer;

<http://www.officialcerts.com/allexams.asp>

To contact our Support;

<http://www.officialcerts.com/support.asp>

View FAQs

<http://www.officialcerts.com/faq.asp>

Download All Exams Samples

<http://www.officialcerts.com/samples.asp>

To purchase Full Version and updated exam;

<http://www.officialcerts.com/allexams.asp>



Shop now using **PayPal**



3COM	CompTIA	Filemaker	IBM	LPI	OMG	Sun
ADOBE	ComputerAssociates	Fortinet	IISFA	McAfee	Oracle	Sybase
APC	CWNP	Foundry	Intel	McData	PMI	Symantec
Apple	DELL	Fujitsu	ISACA	Microsoft	Polycom	TeraData
BEA	ECCouncil	GuidanceSoftware	ISC2	Mile2	RedHat	TIA
BICSI	EMC	HDI	ISEB	NetworkAppliance	Sair	Tibco
CheckPoint	Enterasys	Hitachi	ISM	Network-General	SASInstitute	TruSecure
Cisco	ExamExpress	HP	Juniper	Nokia	SCP	Veritas
Citrix	Exin	Huawei	Legato	Nortel	See-Beyond	Vmware
CIW	ExtremeNetworks	Hyperion	Lotus	Novell	Google	

*You have made the*  
**Right Choice**

You are becoming member of most comprehensive, accurate, highest quality and lowest cost certification resource in the world.

