

050-663

Novell

Integrating Novell eDirectory and Active Directory

OfficialCerts.com is a reputable IT certification examination guide, study guides and audio exam provider. We ensure that you pass your 050-663 exam in first attempt and also get high scores to acquire Novell certification.

If you use OfficialCerts 050-663 Certification questions and answers, you will experience actual 050-663 exam questions/answers. We know exactly what is needed and have all the exam preparation material required to pass the exam. Our Novell exam prep covers over 95% of the questions and answers that may be appeared in your 050-663 exam. Every point from pass4sure 050-663 PDF, 050-663 review will help you take Novell 050-663 exam much easier and become Novell certified.

Here's what you can expect from the OfficialCerts Novell 050-663 course:

- * Up-to-Date Novell 050-663 questions as experienced in the real exam.*
- * 100% correct Novell 050-663 answers you simply can't find in other 050-663 courses.*
- * All of our tests are easy to download. Your file will be saved as a 050-663 PDF.*
- * Novell 050-663 brain dump free content featuring the real 050-663 test questions.*

Novell 050-663 certification exam is of core importance both in your Professional life and Novell certification path. With Novell certification you can get a good job easily in the market and get on your path for success. Professionals who passed Novell 050-663 exam training are an absolute favorite in the industry. You will pass Novell 050-663 certification test and career opportunities will be open for you.

<http://tripleamarine.com/?cert=exams.asp?examcode=050-663>



QUESTION 1:

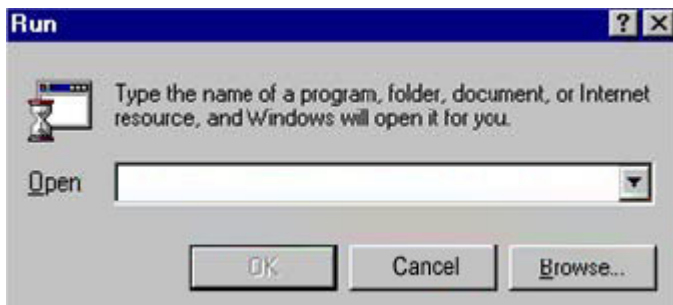
Which groups are created by default when a Windows 2000 server is installed?
(Choose 3.)

- A. Users
- B. Guests
- C. Backup Operators
- D. Domain Operators
- E. Network Operators
- F. Server Administrators

Answer: A, B, C

QUESTION 2:

You would like to run the default Microsoft Management Console. Enter the command that you would use in the Open box to start this utility.



Answer: mmc

QUESTION 3:

Which statements about Windows 2000 native mode are true? (Choose 2.)

- A. Native mode allows backward compatibility.
- B. After you make the switch to native mode, it cannot be undone.
- C. After you make the switch to native mode, you can switch back to mixed mode at any time.
- D. You can switch to native mode if there are Windows NT domain controllers within the domain.
- E. Native mode allows you to take advantage of all features and capabilities of Active Directory.

Answer: B, E

QUESTION 4:

Your network environment includes 1 Windows 2000 server, 5 Windows 2000 workstations, 5 Macintosh computers, and 2 printers. You need to share company records that are stored on the server. Which file system would you choose during a Windows 2000 Server installation?

- A. HPFS
- B. NTFS
- C. OS/2
- D. FAT-16
- E. FAT-32

Answer: B

QUESTION 5:

What is the primary mechanism supporting the Kerberos v5 protocol?

- A. Key Generation Center
- B. Key Distribution Center
- C. Ticket Granting Service
- D. Key Distribution Control
- E. Mutual Authentication Center

Answer: B

QUESTION 6:

What is required before eDirectory can be installed on Windows 2000? (Choose 2.)

- A. NTFS
- B. ConsoleOne
- C. eDirectory manager
- D. SLP Directory agent
- E. Administrative rights

Answer: A, E

QUESTION 7:

Which objects displayed in ConsoleOne can be modified and allow you to add eDirectory users to an Active Directory group? (Choose 2.)

- A. Group

- B. Server
- C. Organization
- D. eDirectory User
- E. Organizational Unit

Answer: A, D

QUESTION 8:

Which are features of Windows 2000 Advanced Server? (Choose 2.)

- A. It supports up to 4 GB RAM.
- B. It supports multiple processors.
- C. It provides clustering technologies.
- D. It supports Windows 95 device drivers.
- E. It supports RAID technology for software virus protection.

Answer: B, C

QUESTION 9:

When would Windows 2000 Server be a good choice over Windows 2000 Professional? (Choose 2.)

- A. When a web server is needed
- B. When Terminal services are needed
- C. When plug-and-play support is needed
- D. When local security for files is needed
- E. When multiple processors exist in a machine

Answer: A, B

QUESTION 10:

Which statement defines the Windows 2000 Advanced Server term "scaling up"?

- A. An increase in accessibility of a server via the LAN
- B. Increasing the client access license count for a server
- C. Distributing the load of network requests through server technology
- D. The increased performance and capacity gained by adding processors and memory to a server

Answer: D

QUESTION 11:

OfficialCerts.com Certification Exam Full Version Features;

- Verified answers researched by industry experts.
- Exams **updated** on regular basis.
- Questions, Answers are downloadable in **PDF** format.
- **No authorization** code required to open exam.
- **Portable** anywhere.
- 100% success **Guarantee**.
- **Fast**, helpful support 24x7.

View list of All exams we offer;

<http://www.officialcerts.com/allexams.asp>

To contact our Support;

<http://www.officialcerts.com/support.asp>

View FAQs

<http://www.officialcerts.com/faq.asp>

Download All Exams Samples

<http://www.officialcerts.com/samples.asp>

To purchase Full Version and updated exam;

<http://www.officialcerts.com/allexams.asp>



Shop now using **PayPal**



3COM	CompTIA	Filemaker	IBM	LPI	OMG	Sun
ADOBE	ComputerAssociates	Fortinet	IISFA	McAfee	Oracle	Sybase
APC	CWNP	Foundry	Intel	McData	PMI	Symantec
Apple	DELL	Fujitsu	ISACA	Microsoft	Polycom	TeraData
BEA	ECCouncil	GuidanceSoftware	ISC2	Mile2	RedHat	TIA
BICSI	EMC	HDI	ISEB	NetworkAppliance	Sair	Tibco
CheckPoint	Enterasys	Hitachi	ISM	Network-General	SASInstitute	TruSecure
Cisco	ExamExpress	HP	Juniper	Nokia	SCP	Veritas
Citrix	Exin	Huawei	Legato	Nortel	See-Beyond	Vmware
CIW	ExtremeNetworks	Hyperion	Lotus	Novell	Google	

You have made the
Right Choice

You are becoming member of most comprehensive, accurate, highest quality and lowest cost certification resource in the world.

