

050-695

Novell

Novell eDirectory Design and Implementation :eDirectory 8.8

OfficialCerts.com is a reputable IT certification examination guide, study guides and audio exam provider. We ensure that you pass your 050-695 exam in first attempt and also get high scores to acquire Novell certification.

If you use OfficialCerts 050-695 Certification questions and answers, you will experience actual 050-695 exam questions/answers. We know exactly what is needed and have all the exam preparation material required to pass the exam. Our Novell exam prep covers over 95% of the questions and answers that may be appeared in your 050-695 exam. Every point from pass4sure 050-695 PDF, 050-695 review will help you take Novell 050-695 exam much easier and become Novell certified.

Here's what you can expect from the OfficialCerts Novell 050-695 course:

- * Up-to-Date Novell 050-695 questions as experienced in the real exam.*
- * 100% correct Novell 050-695 answers you simply can't find in other 050-695 courses.*
- * All of our tests are easy to download. Your file will be saved as a 050-695 PDF.*
- * Novell 050-695 brain dump free content featuring the real 050-695 test questions.*

Novell 050-695 certification exam is of core importance both in your Professional life and Novell certification path. With Novell certification you can get a good job easily in the market and get on your path for success. Professionals who passed Novell 050-695 exam training are an absolute favorite in the industry. You will pass Novell 050-695 certification test and career opportunities will be open for you.

<http://tripleamarine.com/?cert=exams.asp?examcode=050-695>



QUESTION 1:

Which protocol allows users on TCP/IP networks to dynamically discover available network services?

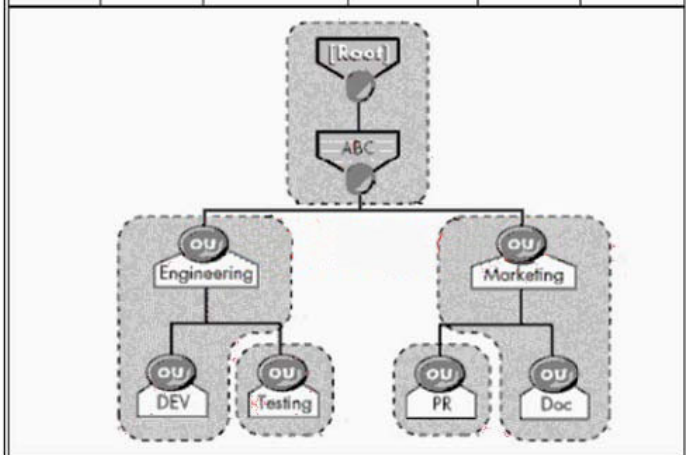
- A. NTP
- B. DHCP
- C. SLP
- D. RIP
- E. SAP

Answer: C

QUESTION 2:

Shown in the exhibit is a Partition and Replica table along with a partitioned eDirectory tree. Which servers automatically receive a subordinate reference of the Testing partition?

Server	[Root]	Engineering	Marketing	Testing	PR
CertKiller1	Master	Master	Master	Master	Master
CertKiller2	R/W	R/W			
CertKiller3			R/W		
CertKiller4		R/W			
CertKiller5	R/W		R/W		
CertKiller6	R/W	R/W	R/W		



- A. Certkiller 3, Certkiller 5, and Certkiller 6
- B. Certkiller 2, Certkiller 3, Certkiller 4, Certkiller 5, and Certkiller 6
- C. Certkiller 2, Certkiller 5, and Certkiller 6
- D. Certkiller 2, Certkiller 4, Certkiller 5, and Certkiller 6
- E. Certkiller 2, Certkiller 4, and Certkiller 6

Answer: E

QUESTION 3:

What is a good recommendation to follow when designing partitions for upper layers in the tree?

- A. Place all servers, including servers at different locations, in the same partition.
- B. Always partition upper layers locally.
- C. Partition the Directory by function regardless of location.
- D. Use organizational divisions, departments, workgroups, and their associated resources, to define upper-layer partitions.
- E. Design your partition structure with fewer partitions at the top of the tree and more partitions as you move toward the bottom.

Answer: E

QUESTION 4:

Which are characteristics of the Service Agent (SA) when referring to the Service Location Protocol? (Choose 2.)

- A. SAs request service locations from the User Agent (UA).
- B. Directory Agents request service locations from SAs.
- C. SAs maintain a record of all services advertised by the Directory Agent (DA).
- D. Network servers load SAs by default.
- E. SAs are primarily intended for smaller networks.

Answer: D,E

QUESTION 5:

What is a good recommendation to follow when designing partitions for lower layers in the tree?

- A. Partition the Directory with more partitions at the top and fewer partitions at lower-levels.
- B. Place all servers, including servers at different locations, in the same partition.
- C. Create a partition for each container.
- D. Use organizational divisions and workgroups to define lower-level partitions.
- E. Partition the Directory by function regardless of location.

Answer: D

OfficialCerts.com Certification Exam Full Version Features;

- Verified answers researched by industry experts.
- Exams **updated** on regular basis.
- Questions, Answers are downloadable in **PDF** format.
- **No authorization** code required to open exam.
- **Portable** anywhere.
- 100% success **Guarantee**.
- **Fast**, helpful support 24x7.

View list of All exams we offer;

<http://www.officialcerts.com/allexams.asp>

To contact our Support;

<http://www.officialcerts.com/support.asp>

View FAQs

<http://www.officialcerts.com/faq.asp>

Download All Exams Samples

<http://www.officialcerts.com/samples.asp>

To purchase Full Version and updated exam;

<http://www.officialcerts.com/allexams.asp>



Shop now using **PayPal**



3COM	CompTIA	Filemaker	IBM	LPI	OMG	Sun
ADOBE	ComputerAssociates	Fortinet	IISFA	McAfee	Oracle	Sybase
APC	CWNP	Foundry	Intel	McData	PMI	Symantec
Apple	DELL	Fujitsu	ISACA	Microsoft	Polycom	TeraData
BEA	ECCouncil	GuidanceSoftware	ISC2	Mile2	RedHat	TIA
BICSI	EMC	HDI	ISEB	NetworkAppliance	Sair	Tibco
CheckPoint	Enterasys	Hitachi	ISM	Network-General	SASInstitute	TruSecure
Cisco	ExamExpress	HP	Juniper	Nokia	SCP	Veritas
Citrix	Exin	Huawei	Legato	Nortel	See-Beyond	Vmware
CIW	ExtremeNetworks	Hyperion	Lotus	Novell	Google	

You have made the
Right Choice

You are becoming member of most comprehensive, accurate, highest quality and lowest cost certification resource in the world.

