

# 350-020

## Cisco

### CCIE SP Optical Qualification

*OfficialCerts.com is a reputable IT certification examination guide, study guides and audio exam provider. We ensure that you pass your 350-020 exam in first attempt and also get high scores to acquire Cisco certification.*

*If you use OfficialCerts 350-020 Certification questions and answers, you will experience actual 350-020 exam questions/answers. We know exactly what is needed and have all the exam preparation material required to pass the exam. Our Cisco exam prep covers over 95% of the questions and answers that may be appeared in your 350-020 exam. Every point from pass4sure 350-020 PDF, 350-020 review will help you take Cisco 350-020 exam much easier and become Cisco certified.*

*Here's what you can expect from the OfficialCerts Cisco 350-020 course:*

- \* Up-to-Date Cisco 350-020 questions as experienced in the real exam.*
- \* 100% correct Cisco 350-020 answers you simply can't find in other 350-020 courses.*
- \* All of our tests are easy to download. Your file will be saved as a 350-020 PDF.*
- \* Cisco 350-020 brain dump free content featuring the real 350-020 test questions.*

*Cisco 350-020 certification exam is of core importance both in your Professional life and Cisco certification path. With Cisco certification you can get a good job easily in the market and get on your path for success. Professionals who passed Cisco 350-020 exam training are an absolute favorite in the industry. You will pass Cisco 350-020 certification test and career opportunities will be open for you.*

<http://tripleamarine.com/?cert=exams.asp?examcode=350-020>



<b>Exam Name:</b>	<b>CCIE SP Optical Qualification</b>		
<b>Exam Type</b>	<b>Cisco</b>	<b>Exam Code:</b>	<b>350-020</b>
<b>Doc. Type:</b>	<b>Q &amp; A with Explanations</b>	<b>Total Questions:</b>	<b>400</b>

**Question: 1**

What IE is not mandatory in a Q.931 Service msg?

- A. Bearer capability
- B. Channel ID
- C. Message Type
- D. Change Status
- E. Call Reference

**Answer : A**

**Question: 2**

The purpose of Administrative Distance, as used by Cisco routers, is:

- A. To choose between routes from different routing protocols when receiving updates for the same network
- B. To identify which routing protocol forwarded the update
- C. To define the distance to the destination used in deciding the best path
- D. To be used only for administrative purposes

**Answer : A**

**Question: 3**

What is the maximum PMD value of a 100km fiber segment if the cable is specified with 0.5ps/km ? (worst case)?

- A. 0.005ps
- B. .05ps
- C. 5ps
- D. 50ps
- E. 500ps

**Answer : C**

**Question: 4**

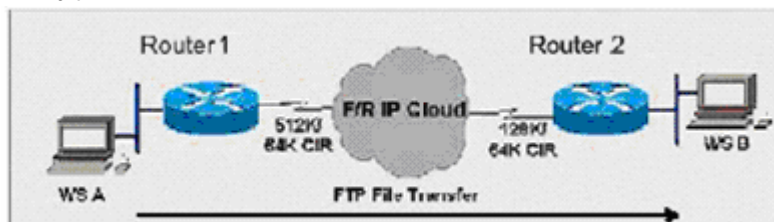
What is the equivalent of 50 GHz spacing in DWDM in terms of nm?

- A. 1.6 nm
- B. 0.8 nm
- C. 0.4 nm
- D. 0.2 nm

**Answer: C**

**Question: 5**

Exhibit:



Exam Name:	CCIE SP Optical Qualification		
Exam Type	Cisco	Exam Code:	350-020
Doc. Type:	Q & A with Explanations	Total Questions:	400

Router ES1 has a 512K-access port into the frame relay cloud. Router ES2 has 128K-access port into the frame relay cloud. The two routers are connected with symmetrical PVCs that are configured for 64K committed information rate (CIR). What Frame Relay Traffic Shaping map-class sub-command should be entered on Router A to prevent workstation A from overrunning the access port on Router B?

Image: 020-a-5-1.jpg

- A. frame-relay traffic-rate 128000 512000
- B. frame-relay traffic-rate 64000 512000
- C. frame-relay traffic-rate 512000 64000
- D. frame-relay traffic-rate 128000 64000
- E. frame-relay traffic-rate 64000 128000

**Answer: E**

**Question: 6**

If a host sends a TCP segment with the RST flag set, it means:

- A. The receiver should send all data in the reassembly buffer to the application receiving it immediately.
- B. The receiver should reset the session.
- C. Any routers between the source and destination hosts should reset the state of the connection in their buffers.
- D. The receiver should make certain its send buffer is pushed onto the wire.

**Answer : B**

**Question: 7**

How many E1 channels can STM-1 frame transport?

- A. 7
- B. 21
- C. 63
- D. 84

**Answer: C**

**Question: 8**

BGP can implement a policy of 'Route Dampening' to control route instability. What statement about route dampening is NOT correct?

- A. A numeric penalty is applied to a route each time it flaps.
- B. The penalty is exponentially decayed according to parameters, such as half-life-time.
- C. The history of unstable routes is forwarded back to the sender to control future updates.
- D. The route is eventually suppressed based on a configurable 'suppress limit'.

**Answer : C**

**Question: 9**

MPLS traffic engineering data is carried by:

- A. Opaque LSAs or IS-IS TLVs
- B. BGP MEDs
- C. RTP or RTCP packets

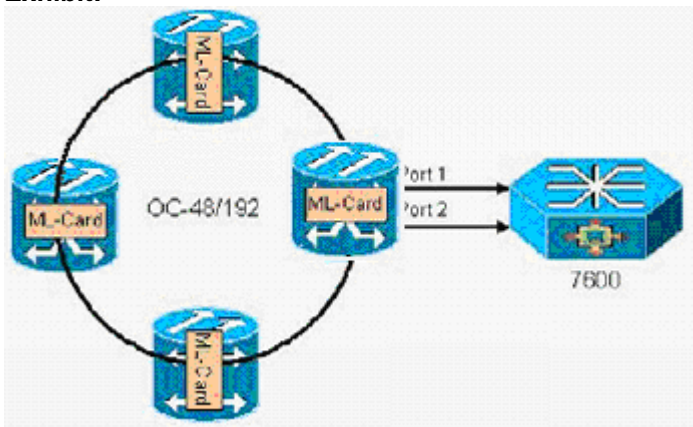
Exam Name:	CCIE SP Optical Qualification		
Exam Type	Cisco	Exam Code:	350-020
Doc. Type:	Q & A with Explanations	Total Questions:	400

D. MBGP

**Answer: A**

**Question: 10**

**Exhibit:**



In the diagram, if a resilient packet ring (RPR) is built between ML-series cards, \_\_\_\_ restoration exists on the ring, while the redundant connections to the 7609 rely on \_\_\_\_ protection.  
Image: 020-a-10-1.jpg

- A. 50 ms, STP
- B. STP, STP
- C. STP, 1+1 APS
- D. 50ms, 50ms

**Answer: A**

**Question: 11**

How many E-1s can be aggregated (maximum) and mapped into a VC-12 Signal?

- A. 1
- B. 7
- C. 14
- D. 28
- E. 32

**Answer: A**

**Question: 12**

What is Fast EtherChannel?

- A. A feature to bundle multiple Ethernet point-to-point links quickly into one logical high speed link
- B. A feature to bundle multiple Fast-Ethernet point-to-point links into one logical high speed link
- C. Another name for full-duplex Fast Ethernet
- D. Another name for Gigabit Ethernet
- E. None of the above

**Answer: B**

**Question: 13**

**Exhibit:**

## OfficialCerts.com Certification Exam Full Version Features;

- Verified answers researched by industry experts.
- Exams **updated** on regular basis.
- Questions, Answers are downloadable in **PDF** format.
- **No authorization** code required to open exam.
- **Portable** anywhere.
- 100% success **Guarantee**.
- **Fast**, helpful support 24x7.

View list of All exams we offer;

<http://www.officialcerts.com/allexams.asp>

To contact our Support;

<http://www.officialcerts.com/support.asp>

View FAQs

<http://www.officialcerts.com/faq.asp>

Download All Exams Samples

<http://www.officialcerts.com/samples.asp>

To purchase Full Version and updated exam;

<http://www.officialcerts.com/allexams.asp>



Shop now using **PayPal**



3COM	CompTIA	Filemaker	IBM	LPI	OMG	Sun
ADOBE	ComputerAssociates	Fortinet	IISFA	McAfee	Oracle	Sybase
APC	CWNP	Foundry	Intel	McData	PMI	Symantec
Apple	DELL	Fujitsu	ISACA	Microsoft	Polycom	TeraData
BEA	ECCouncil	GuidanceSoftware	ISC2	Mile2	RedHat	TIA
BICSI	EMC	HDI	ISEB	NetworkAppliance	Sair	Tibco
CheckPoint	Enterasys	Hitachi	ISM	Network-General	SASInstitute	TruSecure
Cisco	ExamExpress	HP	Juniper	Nokia	SCP	Veritas
Citrix	Exin	Huawei	Legato	Nortel	See-Beyond	Vmware
CIW	ExtremeNetworks	Hyperion	Lotus	Novell	Google	

*You have made the*  
**Right Choice**

You are becoming member of most comprehensive, accurate, highest quality and lowest cost certification resource in the world.

