

350-027

Cisco

CCIE Written: Metro Ethernet

OfficialCerts.com is a reputable IT certification examination guide, study guides and audio exam provider. We ensure that you pass your 350-027 exam in first attempt and also get high scores to acquire Cisco certification.

If you use OfficialCerts 350-027 Certification questions and answers, you will experience actual 350-027 exam questions/answers. We know exactly what is needed and have all the exam preparation material required to pass the exam. Our Cisco exam prep covers over 95% of the questions and answers that may be appeared in your 350-027 exam. Every point from pass4sure 350-027 PDF, 350-027 review will help you take Cisco 350-027 exam much easier and become Cisco certified.

Here's what you can expect from the OfficialCerts Cisco 350-027 course:

- * Up-to-Date Cisco 350-027 questions as experienced in the real exam.*
- * 100% correct Cisco 350-027 answers you simply can't find in other 350-027 courses.*
- * All of our tests are easy to download. Your file will be saved as a 350-027 PDF.*
- * Cisco 350-027 brain dump free content featuring the real 350-027 test questions.*

Cisco 350-027 certification exam is of core importance both in your Professional life and Cisco certification path. With Cisco certification you can get a good job easily in the market and get on your path for success. Professionals who passed Cisco 350-027 exam training are an absolute favorite in the industry. You will pass Cisco 350-027 certification test and career opportunities will be open for you.

<http://tripleamarine.com/?cert=exams.asp?examcode=350-027>

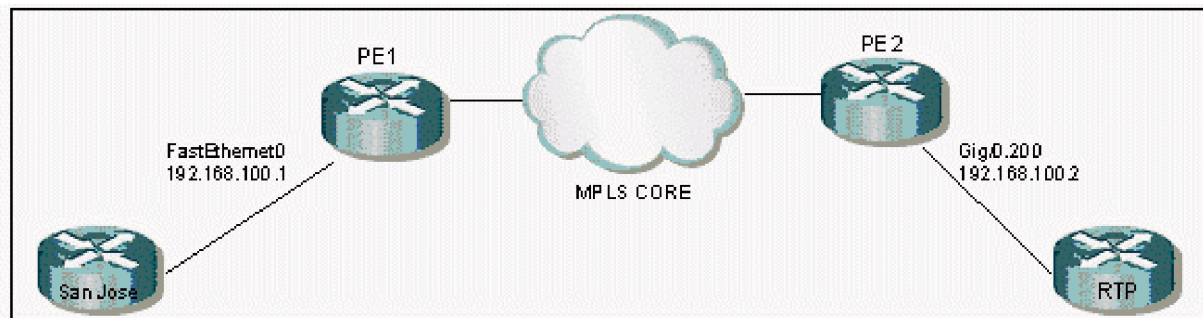


- A. Sets the time limit of how long a router may keep a packet in its buffer, if the routing protocol is in the process of converging
- B. Determines the number of seconds a router will wait before sending another update to neighbor routers
- C. Sets a specific period for routers to neither accept nor advertise a route from a destination where an original route was recently lost
- D. Sets a duration where routes are not accepted from the neighbor router that caused a routing loop

Answer: C

QUESTION: 4

Click the Exhibit button. PE1 and PE2 are connected to the MPLS cloud. All MPLS labels from PE1 and PE2 are working. Observing the shown topology, will this scenario work?



- A. This scenario will not work because Gigabit Ethernet can't be connected to FastEthernet over MPLS.
- B. This scenario will work because the issues concerning Gigabit and FastEthernet over MPLS with default behavior should not make any difference.
- C. This scenario will not work because Gigabit usually has MTU over 9000 and FastEthernet 1500.
- D. This scenario will not work because one side has dot1q header and another side is in port mode.
- E. This scenario will work by configuring PWE Class using the Interworking feature. By default, the MTU on each side is 1500, so this is an acceptable solution.

Answer: E

QUESTION: 5

Which do NOT exist?

- A. Per VLAN Spanning Tree (PVST).
- B. Per VLAN Spanning Tree Plus (PVST+).

- C. Per VLAN Spanning Tree Plus Plus (PVST++).
- D. Rapid STP (RSTP).
- E. Resilient STP (RSTP).

Answer: C, E

QUESTION: 6

Which commands are valid in ethernet or ethernet VLAN attachment circuits?

- A. match cos
- B. match ethernet cos
- C. match source-mac
- D. match vlan
- E. match ethernet multicast

Answer: A, D

QUESTION: 7

OSPF is defined on a Frame Relay interface providing point-to-multipoint connections. The remote neighbors can reach this central site, but are complaining of routing failures between each of the remote sites. The central router has all the routes for each remote site. Based on this information, what can be diagnosed as the biggest potential problem?

- A. An over-subscribed Frame Relay switch will cause some packet loss.
- B. There are problems in the use of OSPF Authentication.
- C. There is an incorrect selection of the Designated Router.
- D. There is an incorrect DLCI assigned on a point-to-point sub-interface.

Answer: C

QUESTION: 8

EIGRP applies the principle of Feasible Successor (FS) in resolving a new path to a lost route. What statement regarding the FS is correct?

- A. Information is stored for the FS as part of the Link-State Routing updates forwarded for EIGRP.
- B. EIGRP estimates the FS from each neighbor for each network after an exchange of database information during the normal update process. It uses this information for path selection when a route is lost.
- C. When EIGRP is notified that a route is lost, it will always send requests to each neighbor for ways to reach the lost route. The neighbor that returns the best path will qualify as the FS.

D. EIGRP nominates a central router as the FS for all lost routes during configuration.

Answer: B

QUESTION: 9

What technology allows transporting Layer2 attachment circuits over IP-only backbones?

- A. GRE
- B. AToM
- C. L2TPv3
- D. DLSW+

Answer: C

QUESTION: 10

Which are supported ways of transporting ATM over MPLS?

- A. AAL5 SDU VC Mode
- B. AAL5 SDU VP Mode
- C. Packet Cell Relay AAL5 Trunk Mode
- D. Packed Cell Relay Trunk mode
- E. AAL2oMPLS

Answer: A, C

QUESTION: 11

What IE is not mandatory in a Q.931 Service msg?

- A. Bearer capability
- B. Channel ID
- C. Message Type
- D. Change Status
- E. Call Reference

Answer: A

QUESTION: 12

Which statements are true regarding VPLS?

- A. There is a full mesh of pseudowires.

- B. There is a partial mesh of pseudowires.
- C. Only L2TPv3 can be used for pseudowire establishment.
- D. STP runs in the core.
- E. There is split-horizon to avoid loops.

Answer: A, E

QUESTION: 13

How many bits does TCI contain?

- A. 1
- B. 3
- C. 6
- D. 12
- E. 16
- F. 20

Answer: E

QUESTION: 14

What command is used for Interworking configuration?

- A. ``interworking {etherner | ip}` in interface config mode.
- B. ``interworking {etherner | ip}` in pseudowire-class config mode.
- C. ``Interworking {bridged | routed}` in l2tp-class mode.
- D. ``{ip | ethernet}Interworking` in pseudowire-class config mode.

Answer: B

QUESTION: 15

A router is set to boot from flash, but cannot find boot commands in the configuration. Also, valid files do not exist in the default flash device. The router will:

- A. Boot from ROM, since there are no valid sources
- B. Try to boot from the network, using a default filename
- C. Terminate the boot process with an error message
- D. Try to boot from the network, then boot from ROM as a backup

Answer: D

OfficialCerts.com Certification Exam Full Version Features;

- Verified answers researched by industry experts.
- Exams **updated** on regular basis.
- Questions, Answers are downloadable in **PDF** format.
- **No authorization** code required to open exam.
- **Portable** anywhere.
- 100% success **Guarantee**.
- **Fast**, helpful support 24x7.

View list of All exams we offer;

<http://www.officialcerts.com/allexams.asp>

To contact our Support;

<http://www.officialcerts.com/support.asp>

View FAQs

<http://www.officialcerts.com/faq.asp>

Download All Exams Samples

<http://www.officialcerts.com/samples.asp>

To purchase Full Version and updated exam;

<http://www.officialcerts.com/allexams.asp>



Shop now using **PayPal**



3COM	CompTIA	Filemaker	IBM	LPI	OMG	Sun
ADOBE	ComputerAssociates	Fortinet	IISFA	McAfee	Oracle	Sybase
APC	CWNP	Foundry	Intel	McData	PMI	Symantec
Apple	DELL	Fujitsu	ISACA	Microsoft	Polycom	TeraData
BEA	ECCouncil	GuidanceSoftware	ISC2	Mile2	RedHat	TIA
BICSI	EMC	HDI	ISEB	NetworkAppliance	Sair	Tibco
CheckPoint	Enterasys	Hitachi	ISM	Network-General	SASInstitute	TruSecure
Cisco	ExamExpress	HP	Juniper	Nokia	SCP	Veritas
Citrix	Exin	Huawei	Legato	Nortel	See-Beyond	Vmware
CIW	ExtremeNetworks	Hyperion	Lotus	Novell	Google	

You have made the
Right Choice

You are becoming member of most comprehensive, accurate, highest quality and lowest cost certification resource in the world.

