

# 4A0-110

## Alcatel-Lucent

### *Alcatel-Lucent Advanced Troubleshooting*

*OfficialCerts.com is a reputable IT certification examination guide, study guides and audio exam provider. We ensure that you pass your 4A0-110 exam in first attempt and also get high scores to acquire Alcatel-Lucent certification.*

*If you use OfficialCerts 4A0-110 Certification questions and answers, you will experience actual 4A0-110 exam questions/answers. We know exactly what is needed and have all the exam preparation material required to pass the exam. Our Alcatel-Lucent exam prep covers over 95% of the questions and answers that may be appeared in your 4A0-110 exam. Every point from pass4sure 4A0-110 PDF, 4A0-110 review will help you take Alcatel-Lucent 4A0-110 exam much easier and become Alcatel-Lucent certified.*

*Here's what you can expect from the OfficialCerts Alcatel-Lucent 4A0-110 course:*

- \* Up-to-Date Alcatel-Lucent 4A0-110 questions as experienced in the real exam.*
- \* 100% correct Alcatel-Lucent 4A0-110 answers you simply can't find in other 4A0-110 courses.*
- \* All of our tests are easy to download. Your file will be saved as a 4A0-110 PDF.*
- \* Alcatel-Lucent 4A0-110 brain dump free content featuring the real 4A0-110 test questions.*

*Alcatel-Lucent 4A0-110 certification exam is of core importance both in your Professional life and Alcatel-Lucent certification path. With Alcatel-Lucent certification you can get a good job easily in the market and get on your path for success. Professionals who passed Alcatel-Lucent 4A0-110 exam training are an absolute favorite in the industry. You will pass Alcatel-Lucent 4A0-110 certification test and career opportunities will be open for you.*

<http://tripleamarine.com/?cert=exams.asp?examcode=4A0-110>



**Question: 1**

Two routers are physically connected to each other over Ethernet port 1/1/1.

Review the configuration information shown below. What state should the OSPF neighbor be in?

```
config> port 1/1/1
      no shutdown
      router interface toNode2
        address 10.1.5.1/24
        port 1/1/1
      router ospf
        area 0.0.0.0
          interface "toNode2"
            hello-interval 15
            dead-interval 40
```

Node 2

```
config> port 1/1/1
      no shutdown
      router interface toNode1
        address 10.1.5.2/24
        port 1/1/1
      router ospf
        area 0.0.0.0
          interface "toNode1"
```

- A. INIT
- B. EXCHANGE
- C. EXSTART
- D. FULL
- E. No OSPF neighbor

**Answer: E**

**Question: 2**

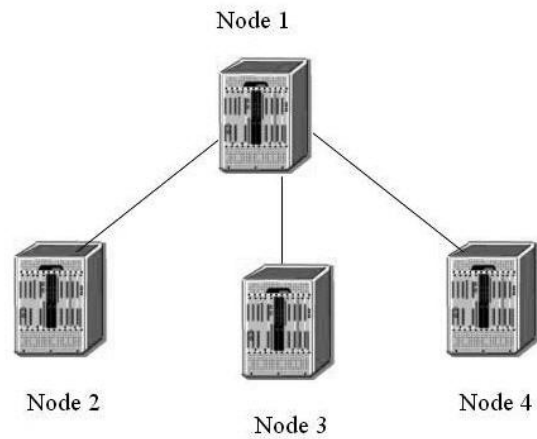
Which of the following debug statements can be used to troubleshoot if the OSPF adjacency is staying at xstart state? Select two answers.

- A. Debug router ospf rtm
- B. Debug router ospf packet dbdescr
- C. Debug router ospf neighbor
- D. Debug router ospf packet hello
- E. Debug router ospf spf

**Answer: B, C**

**Question: 3**

Based on the following configuration, which of the following statements are true? Choose all that apply.



Node-1

```

config>router>ospf#
 area 0.0.0.0
   interface "to-Node-2"
     metric 50
     authentication-key "DoGpEhE4333mNp52Iug6Z82" hash2
   interface "to-Node-3"
     metric 50
 area 0.0.0.1
   nssa
   originate-default-route
   interface "to-Node-4"
     metric 50
  
```

Node-2

```

config>router>ospf#
 area 0.0.0.0
   interface "to-Node-1"
     authentication-key "Sb77iS4bPCeH2&rm5iaFuHAXNbniAg82" hash2
  
```

Node-3

```

config>router>ospf#
 area 0.0.0.0
   interface "to-Node-1"
     hello-interval 15
  
```

Node-4

```

config>router>ospf#
 area 0.0.0.1
   interface "to-Node-1"
     metric 50
  
```

- A. No OSPF adjacency found on Node 1
- B. Full OSPF adjacency between Node-1 and Node-2
- C. Full OSPF adjacency between Node-1 and Node-3
- D. Full OSPF adjacency between Node-1 and Node-4
- E. OSPF is enabled on Node 1

**Answer: B, E**

**Question: 4**

Two routers are physically connected to each other over Ethernet port 1/1/1. Review the configuration information below. What state should the OSPF neighbor be in?

## OfficialCerts.com Certification Exam Full Version Features;

- Verified answers researched by industry experts.
- Exams **updated** on regular basis.
- Questions, Answers are downloadable in **PDF** format.
- **No authorization** code required to open exam.
- **Portable** anywhere.
- 100% success **Guarantee**.
- **Fast**, helpful support 24x7.

View list of All exams we offer;

<http://www.officialcerts.com/allexams.asp>

To contact our Support;

<http://www.officialcerts.com/support.asp>

View FAQs

<http://www.officialcerts.com/faq.asp>

Download All Exams Samples

<http://www.officialcerts.com/samples.asp>

To purchase Full Version and updated exam;

<http://www.officialcerts.com/allexams.asp>



Shop now using **PayPal**



3COM	CompTIA	Filemaker	IBM	LPI	OMG	Sun
ADOBE	ComputerAssociates	Fortinet	IISFA	McAfee	Oracle	Sybase
APC	CWNP	Foundry	Intel	McData	PMI	Symantec
Apple	DELL	Fujitsu	ISACA	Microsoft	Polycom	TeraData
BEA	ECCouncil	GuidanceSoftware	ISC2	Mile2	RedHat	TIA
BICSI	EMC	HDI	ISEB	NetworkAppliance	Sair	Tibco
CheckPoint	Enterasys	Hitachi	ISM	Network-General	SASInstitute	TruSecure
Cisco	ExamExpress	HP	Juniper	Nokia	SCP	Veritas
Citrix	Exin	Huawei	Legato	Nortel	See-Beyond	Vmware
CIW	ExtremeNetworks	Hyperion	Lotus	Novell	Google	

*You have made the*  
**Right Choice**

You are becoming member of most comprehensive, accurate, highest quality and lowest cost certification resource in the world.

