

70-291

Microsoft

Implementing, Managing, and Maintaining a Microsoft Windows Server 2003 Network Infrastructure

OfficialCerts.com is a reputable IT certification examination guide, study guides and audio exam provider. We ensure that you pass your 70-291 exam in first attempt and also get high scores to acquire Microsoft certification.

If you use OfficialCerts 70-291 Certification questions and answers, you will experience actual 70-291 exam questions/answers. We know exactly what is needed and have all the exam preparation material required to pass the exam. Our Microsoft exam prep covers over 95% of the questions and answers that may be appeared in your 70-291 exam. Every point from pass4sure 70-291 PDF, 70-291 review will help you take Microsoft 70-291 exam much easier and become Microsoft certified.

Here's what you can expect from the OfficialCerts Microsoft 70-291 course:

- * Up-to-Date Microsoft 70-291 questions as experienced in the real exam.*
- * 100% correct Microsoft 70-291 answers you simply can't find in other 70-291 courses.*
- * All of our tests are easy to download. Your file will be saved as a 70-291 PDF.*
- * Microsoft 70-291 brain dump free content featuring the real 70-291 test questions.*

Microsoft 70-291 certification exam is of core importance both in your Professional life and Microsoft certification path. With Microsoft certification you can get a good job easily in the market and get on your path for success. Professionals who passed Microsoft 70-291 exam training are an absolute favorite in the industry. You will pass Microsoft 70-291 certification test and career opportunities will be open for you.

<http://tripleamarine.com/?cert=exams.asp?examcode=70-291>



QUESTION: 1

Your network consists of a single Active Directory domain. All servers run Windows Server 2003 Service Pack 2 (SP2). You have a DHCP server that has 10 scopes. You need to add a DNS server to all 10 scopes by using the minimum amount of administrative effort. What should you do?

- A. In the DHCP snap-in, add a server option.
- B. In the DHCP snap-in, add a scope option for each scope.
- C. At a command prompt on the server, run the Chcp command and code page 863.
- D. At a command prompt on the server, run the Netsh command and configure the popd subcontext.

Answer: A

QUESTION: 2

Your network consists of a single Active Directory domain. You have a DHCP server named Server1 that runs Windows Server 2003 Service Pack 2 (SP2). You have a computer named Computer1 that runs Windows XP Professional Service Pack 3 (SP3). You need to administer the DHCP service on Server1 from Computer1. What should you do first?

- A. On Computer1, install adminpak.msi.
- B. On Computer1, at a command prompt run the Netsh command.
- C. On Server1, open the DHCP snap-in and select Export List.
- D. On Server1, open the DHCP snap-in and add Computer1 to the list of servers.

Answer: A

QUESTION: 3

You have two servers named Server1 and Server2 that run Windows Server 2003 Service Pack 2 (SP2). The IP configuration for Server1 is shown in the Server1 IP exhibit. (Click the Exhibit button.) The IP configuration for Server2 is shown in the Server2 IP exhibit. (Click the Exhibit button.) Server1 is unable to contact Server2. You need to ensure that Server1 can contact Server2. What should you do?

Exhibit 1 (exhibit):

```

C:\>ipconfig /all

Windows IP Configuration

    Host Name . . . . . : server1
    Primary Dns Suffix . . . . . :
    Mode Type . . . . . : Broadcast
    IP Routing Enabled. . . . . : Yes
    WINS Proxy Enabled. . . . . : Yes

Ethernet adapter Local Area Connection:

    Connection-specific DNS Suffix . . :
    Description . . . . . : Microsoft Virtual Machine Bus Network Adapter #3
    Physical Address. . . . . : 00-15-5D-AF-FE-19
    DHCP Enabled. . . . . : Yes
    Autoconfiguration Enabled . . . . . : Yes
    Autoconfiguration IP Address. . . . : 169.254.253.30
    Subnet Mask . . . . . : 255.255.0.0
    Default Gateway . . . . . :
    DNS Servers . . . . . : 10.1.1.254

C:\>

```

Exhibit 2 (exhibit):

```

C:\>ipconfig /all

Windows IP Configuration

    Host Name . . . . . : server2
    Primary Dns Suffix . . . . . :
    Mode Type . . . . . : Unknown
    IP Routing Enabled. . . . . : Yes
    WINS Proxy Enabled. . . . . : Yes

Ethernet adapter Local Area Connection:

    Connection-specific DNS Suffix . . :
    Description . . . . . : Microsoft Virtual Machine Bus Network Adapter #3
    Physical Address. . . . . : 00-15-5D-AF-FE-0D
    DHCP Enabled. . . . . : No
    IP Address. . . . . : 10.1.1.10
    Subnet Mask . . . . . : 255.255.255.0
    Default Gateway . . . . . :
    DNS Servers . . . . . : 10.1.1.254

C:\>

```

- A. On Server2, modify the subnet mask.
- B. On Server1, modify the DNS server address.
- C. On Server2, change the node type to broadcast.
- D. On Server1, configure a static IP address for the Local Area Connection.

Answer: D

QUESTION: 4

Your company has a single domain named contoso.com. All servers run Windows Server 2003 Service Pack 2 (SP2). All client computers run Windows XP Service Pack 3 (SP3). All domain controllers are DNS servers. The contoso.com DNS zone is configured to allow only secure updates. The company has two DHCP servers named DHCP1 and DHCP2. All client computers are configured as DHCP clients. You configure the DHCP servers to always update host and pointer (PTR) records in DNS. You need to ensure that both DHCP servers can update all host and PTR records for DHCP clients. What should you do?

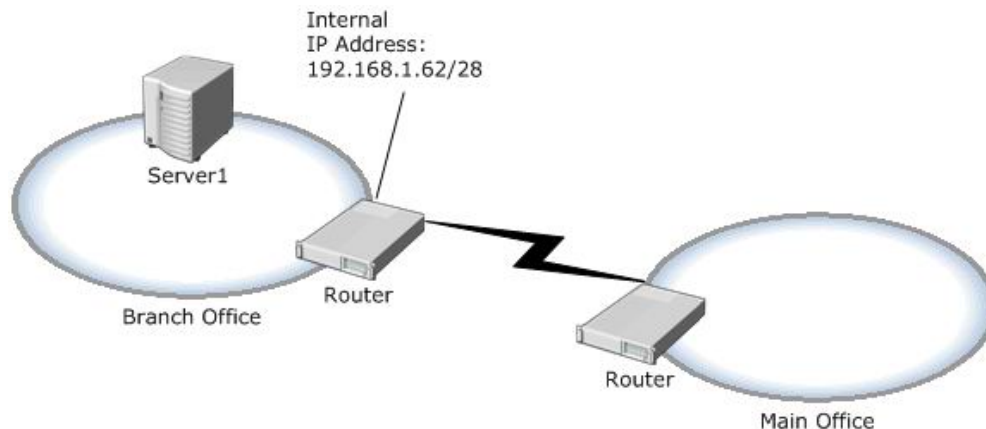
- A. Add DHCP1 and DHCP2 to the DNSAdmins group in the contoso.com domain.
- B. Add DHCP1 and DHCP2 to the DNSUpdateProxy group in the contoso.com domain.
- C. Create a user account named DHCPUser in the contoso.com domain. Configure DHCP1 and DHCP2 to use DHCPUser when updating DNS.
- D. Create a user account named DHCPUser in the contoso.com domain. Add DHCPUser to the DNSUpdateProxy group in the contoso.com domain.

Answer: B

QUESTION: 5

Your company has two offices. All servers run Windows Server 2003 Service Pack 2 (SP2). You deploy a new server named Server1 in the branch office. The relevant portion of the network is configured as shown in the exhibit. (Click the Exhibit button.) You need to ensure that Server1 can communicate with servers in the main office. Which IP address should you assign to Server1?

Exhibit:



- A. 192.168.1.47
- B. 192.168.1.49
- C. 192.168.1.63
- D. 192.168.1.68

Answer: B

QUESTION: 6

Your network consists of a single Active Directory domain. You have a DHCP server that runs Windows Server 2003 Service Pack 2 (SP2). All client computers run Windows XP Service Pack 3 (SP3). A user named User1 reports that when she starts her computer, she receives a duplicate address error message. You confirm that her computer is configured as a DHCP client. You need to ensure that User1 receives a unique IP address from the DHCP server. What should you do on the DHCP server?

- A. Reconcile the scope.
- B. Create a superscope.
- C. Enable conflict resolution.
- D. Increase the number of IP addresses available in the scope.

Answer: C

QUESTION: 7

Your network consists of a single Active Directory domain named nwtraders.com. All network servers run Windows Server 2003 Service Pack 2 (SP2). The relevant IP configuration for the network is configured as shown in the following table.

Name	DC1	Router1	Server2
Role	Domain controller	Hardware router	Stand-alone server
IP address	172.16.16.2	172.16.16.11 172.16.16.129	172.16.16.168
Subnet mask	255.255.255.192	255.255.255.192	255.255.255.192
Default gateway	172.16.16.1	172.16.16.1	172.16.16.1
Preferred DNS server	172.16.16.2	172.16.16.2	172.16.16.2
Secondary DNS server	172.16.16.130	172.16.16.130	172.16.16.130

DC1 contains an Active Directory-integrated zone for nwtraders.com. From Server2, you run the Ping 172.26.26.11 command and receive a request timed out error message. From Server2, you run the Ping 172.16.16.129 command and receive a reply. You need to ensure that you can join Server2 to the nwtraders.com domain. What should you do?

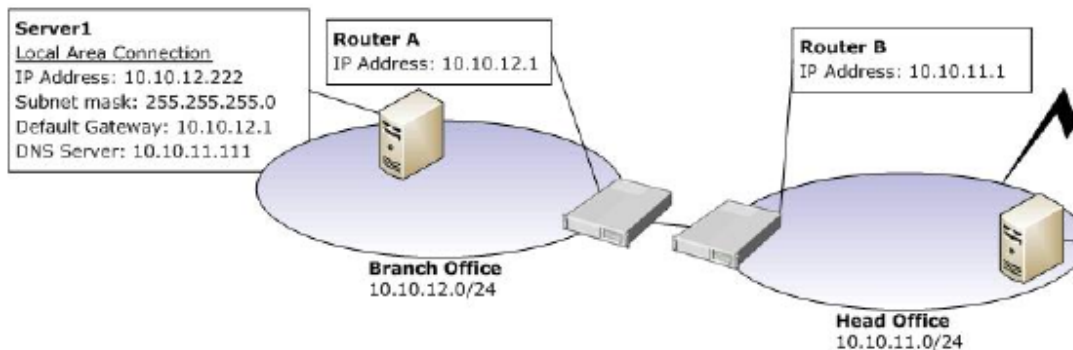
- A. Set the IP address to 172.16.16.2.
- B. Set the subnet mask to 255.255.255.128.
- C. Set the default gateway address to 172.16.16.129.
- D. Set the preferred DNS server address to 172.16.16.130.

Answer: C

QUESTION: 8

Your network contains a head office and one branch office. All servers run Windows Server 2003 Service Pack 2 (SP2). The network and IP configuration for each server are configured as shown in the exhibit. (Click the Exhibit button.) Server2 has the Routing and Remote Access service and the DNS Server service installed. Routing Information Protocol (RIP v2) is enabled on Server2 and all internal routers. Server1 is unable to connect to the Internet. You need to ensure that Server1 can connect to the Internet. What should you do?

Exhibit:



- A. On Server1, configure the default gateway address as 10.10.11.1 and then run Netstat r.
- B. On Server2, configure the preferred DNS server address as 10.10.11.111 and then restart the DNS Server service.
- C. On Server1, configure the default preferred DNS server address as 127.0.0.1 and then restart the DNS Client service.
- D. On Server2, remove the 10.10.11.1 default gateway address and then restart the Routing and Remote Access service.

Answer: D

QUESTION: 9

You are a network administrator for A.Datum Corporation. The network consists of a single Active Directory domain named adatum.net. Users regularly browse the internal network and the Internet from their client computers. All Web and e-mail hosting for a separate DNS domain named adatum.com is outsourced to an ISP. All name resolution requests for adatum.com are resolved by the ISP. You have no administrative control over the DNS servers at the ISP. You cannot list the contents of adatum.com by using the nslookup command on the DNS servers at the ISP. A Windows Server 2003 computer named Server1 is configured with a primary zone for adatum.net. All root hints have been removed from Server1. All client computers refer to this DNS server for name resolution. You need to configure DNS resolution to ensure that all client computers can locate and access resources in adatum.net, adatum.com, and the Internet. What should you do?

- A. Configure a secondary zone for adatum.com on Server1.
- B. Configure a primary zone for adatum.com on Server1.

- C. Configure conditional forwarding for adatum.com with the IP address of the DNS server at the ISP.
- D. Configure simple forwarding with the default settings with the IP address of the DNS server at the ISP.

Answer: D

QUESTION: 10

Your network consists of a single Active Directory domain named contoso.com. All computers are members of the domain. All network servers run Windows Server 2003 Service Pack 2 (SP2).

Your company opens a branch office. In the branch office, you deploy a DNS server that hosts a zone named west.contoso.com. You enable dynamic updates on the west.contoso.com zone.

You need to ensure that all computers in the branch office register resource records in the west.contoso.com zone.

What should you do?

- A. On the DNS server in the branch office, configure a forwarder to a DNS server in the main office.
- B. On the DNS server in the main office, configure a delegation record for west.contoso.com.
- C. On the network adapter for each computer in the branch office, configure the DNS suffix of West.contoso. com.
- D. On the network adapter for each computer in the branch office, append the DNS search suffix of west. contoso.com.

Answer: C

QUESTION: 11

You have 10 DNS servers that run Windows Server 2003 Service Pack 2 (SP2).

You need to automate the management of the DNS server.

Which tool should you use?

- A. Dnscmd.exe
- B. Dnslint.exe
- C. Msconfig.exe

OfficialCerts.com Certification Exam Full Version Features;

- Verified answers researched by industry experts.
- Exams **updated** on regular basis.
- Questions, Answers are downloadable in **PDF** format.
- **No authorization** code required to open exam.
- **Portable** anywhere.
- 100% success **Guarantee**.
- **Fast**, helpful support 24x7.

View list of All exams we offer;

<http://www.officialcerts.com/allexams.asp>

To contact our Support;

<http://www.officialcerts.com/support.asp>

View FAQs

<http://www.officialcerts.com/faq.asp>

Download All Exams Samples

<http://www.officialcerts.com/samples.asp>

To purchase Full Version and updated exam;

<http://www.officialcerts.com/allexams.asp>



Shop now using **PayPal**



3COM	CompTIA	Filemaker	IBM	LPI	OMG	Sun
ADOBE	ComputerAssociates	Fortinet	IISFA	McAfee	Oracle	Sybase
APC	CWNP	Foundry	Intel	McData	PMI	Symantec
Apple	DELL	Fujitsu	ISACA	Microsoft	Polycom	TeraData
BEA	ECCouncil	GuidanceSoftware	ISC2	Mile2	RedHat	TIA
BICSI	EMC	HDI	ISEB	NetworkAppliance	Sair	Tibco
CheckPoint	Enterasys	Hitachi	ISM	Network-General	SASInstitute	TruSecure
Cisco	ExamExpress	HP	Juniper	Nokia	SCP	Veritas
Citrix	Exin	Huawei	Legato	Nortel	See-Beyond	Vmware
CIW	ExtremeNetworks	Hyperion	Lotus	Novell	Google	

You have made the
Right Choice

You are becoming member of most comprehensive, accurate, highest quality and lowest cost certification resource in the world.

