

70-445

Microsoft

TS: Microsoft SQL Server 2005 Business Intelligence – Implementation and Maintenance

Visit: <http://www.pass4sureofficial.com/exams.asp?examcode=70-445>

Pass4sureofficial.com is a reputable IT certification examination guide, study guides and audio exam provider, we not only ensure that you pass your 70-445 exam in first attempt, but also you can get a high score to acquire Microsoft certification.

If you use pass4sureofficial 70-445 Certification questions and answers, you will experience actual 70-445 exam questions/answers. We know exactly what is needed and have all the exam preparation material required to pass the exam. Our Microsoft exam prep covers over 95% of the questions and answers that may be appeared in your 70-445 exam. Every point from pass4sure 70-445 PDF, 70-445 review will help you take Microsoft 70-445 exam much easier and become Microsoft certified. All the Questions/Answers are taken from real exams.

Here's what you can expect from the Pass4sureOfficial Microsoft 70-445 course:

- * Up-to-Date Microsoft 70-445 questions taken from the real exam.
- * 100% correct Microsoft 70-445 answers you simply can't find in other 70-445 courses.
- * All of our tests are easy to download. Your file will be saved as a 70-445 PDF.
- * Microsoft 70-445 brain dump free content featuring the real 70-445 test questions.

Microsoft 70-445 certification exam is of core importance both in your Professional life and Microsoft certification path. With Microsoft certification you can get a good job easily in the market and get on your path for success. Professionals who passed Microsoft 70-445 exam training are an absolute favorite in the industry. You will pass Microsoft 70-445 certification test and career opportunities will be open for you.



Question: 1

You are designing a Microsoft SQL Server 2005 Integration Services (SSIS) package.

The package has the following features:

Two Data Flow tasks and two Control Flow tasks

A success constraint between each Data Flow task and the subsequent Control Flow task

The package uses one transaction for all the tasks.

You need to configure the package so that the two Data Flow tasks use their own transactions. You also need to ensure that each Control Flow task is enlisted in the same transaction as its preceding Data Flow task.

Which three actions should you perform? (Each correct answer presents part of the solution. Choose three.)

- A. Change the TransactionOption property to Supported for the package.
- B. Change the TransactionOption property to Required for the package.
- C. Change the TransactionOption property to Supported for each Data Flow task.
- D. Change the TransactionOption property to Required for each Data Flow task.
- E. Change the TransactionOption property to Supported for each Control Flow task.
- F. Change the TransactionOption property to Required for each Control Flow task.

Answer: A, D, E

Question: 2

You are designing a Microsoft SQL Server 2005 Integration Services (SSIS) package. The package contains 30 Data Flow tasks and 30 Control Flow tasks. The package runs slower than expected. You need to capture the start time the finish time and the elapsed time for the validation and execution of the package. What should you do?

- A. Enable the OnProgress event handler and use the Control Flow tasks to write the information to a log.
- B. Monitor the Progress tab during the execution of the package, and then monitor the Execution Results tab.
- C. Use the Performance Monitor tool to capture the counters from the SQL Server SSIS Service object. Analyze the output for the required information.
- D. Use the Performance Monitor tool to capture the counters from the SQL Server: SSIS Pipeline object. Analyze the output for the required information.

Answer: B

Question: 3

Microsoft SQL Server Management Studio (SSMS) is installed on your workstation. Microsoft Business Intelligence Development Studio (BIDS) is not installed on your workstation.

You need to create a package that must meet the following requirements:

It must be transactional.

It must be optimized for 20 tables.

It must be stored securely in the msdb database of a remote server.

What should you do?

- A. Create the package by using DTS Designer.
- B. Create the package by using the Package Migration Wizard.
- C. Create the package by using the Microsoft SQL Server Import and Export Wizard.
- D. On the Microsoft SQL Server 2005 Integration Services (SSIS) menu, click the Create Package submenu.

Answer: C

Question: 4

You are designing a Microsoft SQL Server 2005 Integration Services (SSIS) package.

While testing, a Transact-SQL user-defined function causes duplicate key values that stop the transformation.

To permit the transformation to continue, the package must perform the following tasks:

1. Ascertain which rows are affected.
2. Insert the rows that fail into a table.
3. Continue with the process.

You need to change certain properties in the package to meet the requirements.

Which three tasks should you perform? (Each correct answer presents part of the solution. Choose three.)

- A. Choose the Redirect Row option for the Error property on the key column.
- B. Choose the Ignore Failure option for the Error property on the key column.
- C. Choose the Fail Component option for the Error property on the key column.
- D. Add a DataReader source to use a new Data Flow destination when the Failure constraint is fired.
- E. Add a DataReader source to use a new Data Flow destination when the Completion constraint is fired.
- F. Edit the Error Output properties for each DataReader source and configure each data source for error handling.

Answer: A, D, F

Question: 5

You are designing a Microsoft SQL Server 2005 Integration Services (SSIS) package. The package uses at least one sequence container in one transaction. Each transaction controls a Data Flow task and a Control Flow task. Each Data Flow task has a Success constraint. The Control Flow task follows the Success constraint. The package must include the following requirements:

Each Data Flow task must use its own transaction.

The Control Flow task and the Data Flow task that precedes it must succeed or fail as an atomic unit.

A restart point must restart each Data Flow task and the Control Flow task that follows it as an atomic unit.

You need to make changes in the control flow designer to meet the outlined requirements.

Which two actions should you perform? (Each correct answer presents part of the solution. Choose two.)

- A. Add all the Data Flow tasks and the Control Flow tasks to one sequence container.
- B. Add a sequence container for each Control Flow task and the Data Flow task that precedes it.
- C. Change the FailPackageOnFailure property to true for each new sequence container that is added to the package.
- D. Change the FailPackageOnFailure property to false for each new sequence container that is added to the package.

Answer: B, C

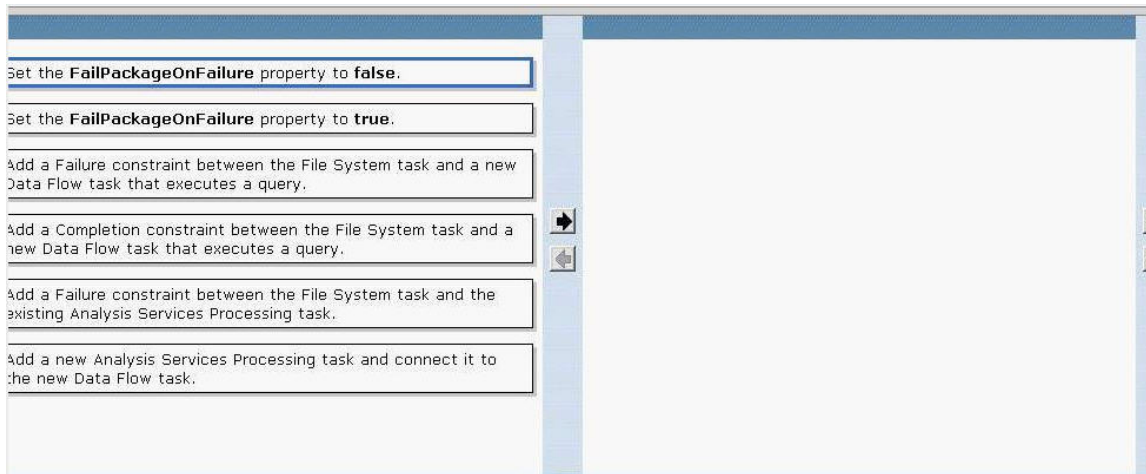
Question: 6

You are designing a Microsoft SQL Server 2005 Integration Services (SSIS) package. An Analysis Services Processing task in the package requires data from a file. The file is exported to a file share.

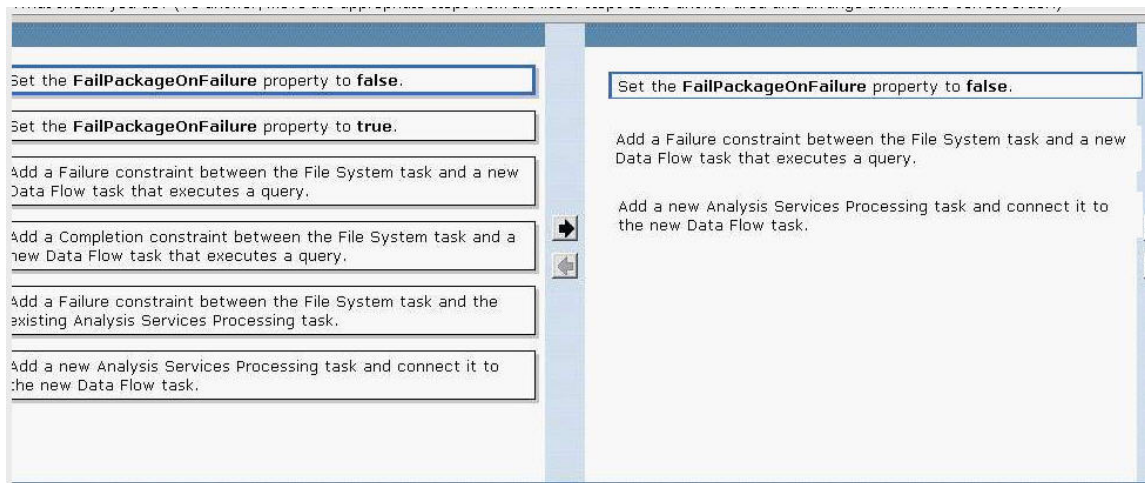
If the file is not available on the file share, the Analysis Services Processing task must import data from a remote Microsoft SQL Server 2005.

You need to add steps to the package to import the data.

What should you do?



Answer:



Question: 7

You are designing a Microsoft SQL Server 2005 Integration Services (SSIS) package.

The OLE DB data source for the package is a database that is updated frequently.

You need to create a package that accomplishes the following tasks:

Implement the IRowsetFastLoad interface.
Support various data flow destinations.

Which two actions should you perform? (Each correct answer presents part of the solution. Choose two.)

- A. Use an OLE DB data flow destination.
- B. Use a Recordset data flow destination.
- C. Use a DataReader data flow destination.
- D. Create separate data flow destinations within the same Data Flow task.

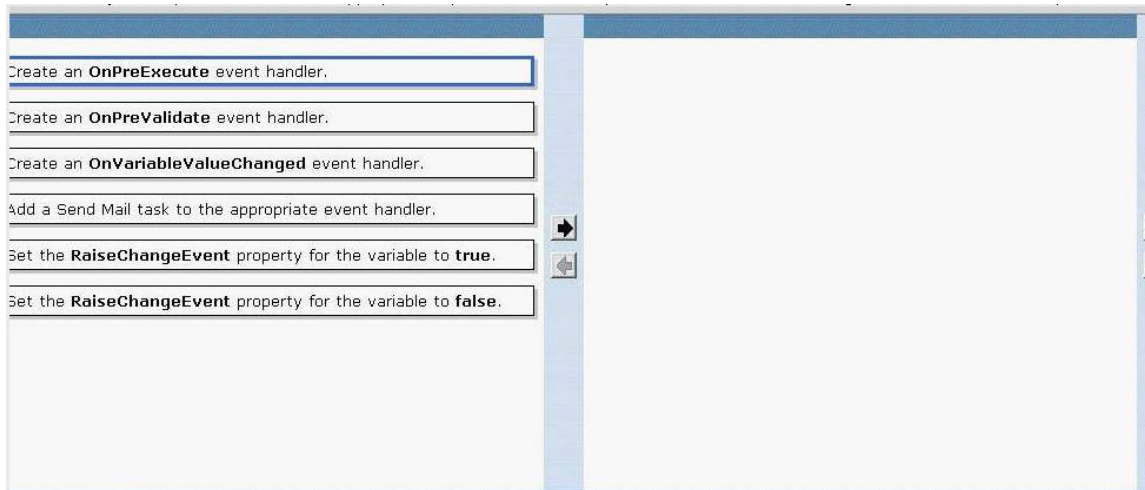
Answer: A, D

Question: 8

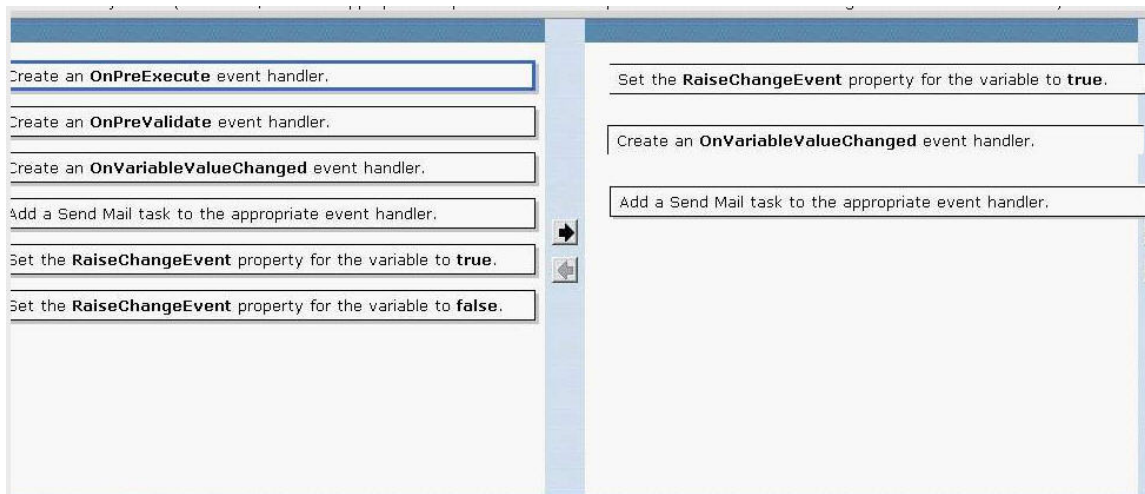
Your company's business intelligence (BI) model uses Microsoft SQL Server 2005 Integration Services (SSIS). There are 20 packages that use the same configuration. The package configuration is stored in an XML file as a variable.

You need to track the changes that affect a package that uses one variable. You also need to modify the package to provide automatic notification by e-mail whenever there are changes to the variable.

What should you do?



Answer:



Question: 9

You are designing a Microsoft SQL Server Integration Services (SSIS) package.

The package contains a single OLE DB data source. The package must be deployed on 10 servers. The package uses the XML configuration file to connect to a pre-assigned server.

You need to ensure that the package uses the correct server at runtime

What should you do?

Pass4SureOfficial.com Lifetime Membership Features;

- Pass4SureOfficial Lifetime Membership Package includes over **2500** Exams.
- **All** exams Questions and Answers are included in package.
- **All** Audio Guides are included **free** in package.
- **All** Study Guides are included **free** in package.
- **Lifetime** login access.
- Unlimited download, no account expiry, no hidden charges, just one time \$99 payment.
- **Free updates** for Lifetime.
- **Free Download Access** to All new exams added in future.
- Accurate answers with explanations (If applicable).
- Verified answers researched by industry experts.
- Study Material **updated** on regular basis.
- Questions, Answers and Study Guides are downloadable in **PDF** format.
- Audio Exams are downloadable in **MP3** format.
- **No authorization** code required to open exam.
- **Portable** anywhere.
- 100% success **Guarantee**.
- **Fast**, helpful support 24x7.

View list of All exams (Q&A) downloads

<http://www.pass4sureofficial.com/allexams.asp>

View list of All Study Guides (SG) downloads

<http://www.pass4sureofficial.com/study-guides.asp>

View list of All Audio Exams (AE) downloads

<http://www.pass4sureofficial.com/audio-exams.asp>

Download All Exams Samples

<http://www.pass4sureofficial.com/samples.asp>

To purchase \$99 Lifetime Full Access Membership click here

<http://www.pass4sureofficial.com/purchase.asp>

3COM	CompTIA	Filemaker	IBM	LPI	OMG	Sun
ADOBE	ComputerAssociates	Fortinet	IISFA	McAfee	Oracle	Sybase
APC	CWNP	Foundry	Intel	McData	PMI	Symantec
Apple	DELL	Fujitsu	ISACA	Microsoft	Polycom	TeraData
BEA	ECCouncil	GuidanceSoftware	ISC2	Mile2	RedHat	TIA
BICSI	EMC	HDI	ISEB	NetworkAppliance	Sair	Tibco
CheckPoint	Enterasys	Hitachi	ISM	Network-General	SASInstitute	TruSecure
Cisco	ExamExpress	HP	Juniper	Nokia	SCP	Veritas
Citrix	Exin	Huawei	Legato	Nortel	See-Beyond	Vmware
CIW	ExtremeNetworks	Hyperion	Lotus	Novell	SNIA	

