

# E20-370

## EMC

### *Networked Storage – CAS Implementation*

*OfficialCerts.com is a reputable IT certification examination guide, study guides and audio exam provider. We ensure that you pass your E20-370 exam in first attempt and also get high scores to acquire EMC certification.*

*If you use OfficialCerts E20-370 Certification questions and answers, you will experience actual E20-370 exam questions/answers. We know exactly what is needed and have all the exam preparation material required to pass the exam. Our EMC exam prep covers over 95% of the questions and answers that may be appeared in your E20-370 exam. Every point from pass4sure E20-370 PDF, E20-370 review will help you take EMC E20-370 exam much easier and become EMC certified.*

*Here's what you can expect from the OfficialCerts EMC E20-370 course:*

- \* Up-to-Date EMC E20-370 questions as experienced in the real exam.*
- \* 100% correct EMC E20-370 answers you simply can't find in other E20-370 courses.*
- \* All of our tests are easy to download. Your file will be saved as a E20-370 PDF.*
- \* EMC E20-370 brain dump free content featuring the real E20-370 test questions.*

*EMC E20-370 certification exam is of core importance both in your Professional life and EMC certification path. With EMC certification you can get a good job easily in the market and get on your path for success. Professionals who passed EMC E20-370 exam training are an absolute favorite in the industry. You will pass EMC E20-370 certification test and career opportunities will be open for you.*

<http://tripleamarine.com/?cert=exams.asp?examcode=E20-370>



**Question: 1**

The customer's Centera is using CentraStar 3.0.  
A third-party vendor implemented an application and requested that a virtual pool and profile be created on the Centera. The application fails in its attempt to write to the Centera. What is a possible problem?

- A - CE + is enabled so no data can be written to the Centera
- B - PEA tile was never provided to the application
- C - Replication wasn't turned on
- D - Storage pool creation not completed

**Answer: B**

**Question: 2**

What is the maximum number of nodes in a Gen 4 Centera Cube?

- A - 4
- B - 8
- C - 16
- D - 32

**Answer: C**

**Question: 3**

Clips need to be migrated from the default pool to a virtual pool. An access profile has already been created. Sequence the following steps to migrate clips:

- 1) Grant the profile access to the pool
- 2) Create application virtual pool
- 3) Start migrating pool mappings
- 4) Set the home pool for the access profile
- 5) Create pool mapping

- A - 2, 4, 1, 5, 3
- B - 2, 5, 4, 1, 3
- C - 2, 1, 4, 5, 3
- D - 2, 1, 5, 4, 3

**Answer: A**

**Question: 4**

What is an "unbundled" cluster?

- A - Flexible solution where the customer chooses any configuration of hardware or software to deploy
- B - Hardware only solution where the software is provided by the customer
- C - Software only solution where the hardware is provided by the customer
- D - Solution where the customer provides the rack in which the cluster is installed

**Answer: D**

**Question: 5**

What does SDK Failover enable with the default setting?

- A - If a C-Clip cannot be found on the primary cluster, then the request goes to the secondary

- cluster
- B - If the communication is interrupted to the primary Centera, all data is rewritten to the secondary Centera
  - C - If the pool has reached its defined quota then data is written automatically to the default pool
  - D - In case of a disk failure, data is written automatically to a node connected to the other power rail

**Answer: A**

**Question: 6**

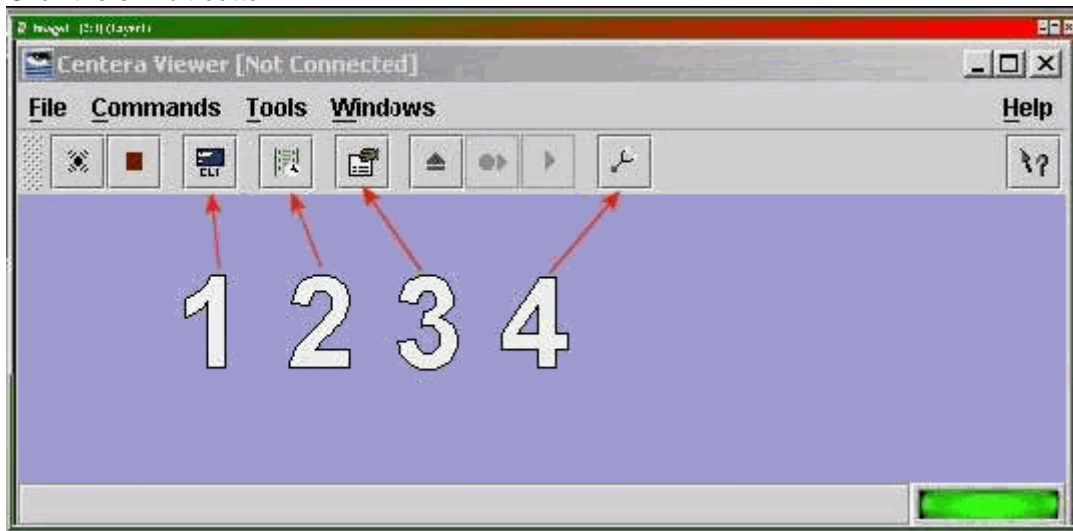
How do you launch the CUA Monitor?

- A - Connect Monitor and keyboard directly to the CUA node and launch web services
- B - Start a http session to the IP-address of the CUA using port 16000
- C - Start a https session to the IP-address of the CUA using port 7227
- D - Starting a SSH session to the IP address of the CUA and use the function "M" in the menu

**Answer: C**

**Question: 7**

Click the exhibit button.



Which button, in the diagram, is used to start the CLI from within Centera viewer?

- A - 1
- B - 2
- C - 3
- D - 4

**Answer: A**

**Question: 8**

What are the available Centera replication topologies in addition to Uni-Directional and Bi-Directional?

- A - Chain and Inward Star
- B - Multipoint to Point and Chain
- C - Point to Multipoint and Link

**Answer: A**

**Question: 9**

A new customer has been testing their Centera in Governance mode. They have specified retention periods ranging from 0 days to 7 years. They would now like to erase the cluster and put it into production. How can the customer remove the test data from the cluster?

- A - Customer can issue a reset cluster command from the CLI
- B - Customer can switch the cluster off for 24 hours to delete all data
- C - Customer can use the privileged delete command to remove the data
- D - Can not be done. data remains on the cluster

**Answer: C**

**Question: 10**

With which enterprise backup solutions does CASbar work?

- A - NDMP compatible systems
- B - NDMP systems with DMA capabilities
- C - Systems capable of mounting a UNIX file system
- D - Systems capable of mounting a windows file system

**Answer: D**

**Question: 11**

How can an application get authenticated by the Centera?

- A - Application sends the Pal-file encrypted to Centera as part of the connection process
- B - Connect string contains IP-Address of one or more access nodes, and a valid pair of name and secret
- C - Send IP address of all access nodes and correct subnet mask as part of the connect string
- D - System administrator has to set an environment variable, which points to the location of the PAI-module

**Answer: B**

**Question: 12**

By default, how many different file sizes does Centera Verify use to perform tests?

- A - 1
- B - 2
- C - 3
- D - 4

**Answer: C**

**Question: 13**

What is the primary benefit of the GM naming scheme?

- A - Combination of the MD5 plus SHA-256 hash algorithms
- B - Containerizes small files for increased performance
- C - Faster for both ingest and cluster operations
- D - Single Instance Storage

## OfficialCerts.com Certification Exam Full Version Features;

- Verified answers researched by industry experts.
- Exams **updated** on regular basis.
- Questions, Answers are downloadable in **PDF** format.
- **No authorization** code required to open exam.
- **Portable** anywhere.
- 100% success **Guarantee**.
- **Fast**, helpful support 24x7.

View list of All exams we offer;

<http://www.officialcerts.com/allexams.asp>

To contact our Support;

<http://www.officialcerts.com/support.asp>

View FAQs

<http://www.officialcerts.com/faq.asp>

Download All Exams Samples

<http://www.officialcerts.com/samples.asp>

To purchase Full Version and updated exam;

<http://www.officialcerts.com/allexams.asp>



Shop now using **PayPal**



3COM	CompTIA	Filemaker	IBM	LPI	OMG	Sun
ADOBE	ComputerAssociates	Fortinet	IISFA	McAfee	Oracle	Sybase
APC	CWNP	Foundry	Intel	McData	PMI	Symantec
Apple	DELL	Fujitsu	ISACA	Microsoft	Polycom	TeraData
BEA	ECCouncil	GuidanceSoftware	ISC2	Mile2	RedHat	TIA
BICSI	EMC	HDI	ISEB	NetworkAppliance	Sair	Tibco
CheckPoint	Enterasys	Hitachi	ISM	Network-General	SASInstitute	TruSecure
Cisco	ExamExpress	HP	Juniper	Nokia	SCP	Veritas
Citrix	Exin	Huawei	Legato	Nortel	See-Beyond	Vmware
CIW	ExtremeNetworks	Hyperion	Lotus	Novell	Google	

*You have made the*  
**Right Choice**

You are becoming member of most comprehensive, accurate, highest quality and lowest cost certification resource in the world.

