

9A0-146

ADOBE

Adobe® Dreamweaver CS5 ACE

Visit: <http://www.pass4sureofficial.com/exams.asp?examcode=9A0-146>

Pass4sureofficial.com is a reputable IT certification examination guide, study guides and audio exam provider, we not only ensure that you pass your 9A0-146 exam in first attempt, but also you can get a high score to acquire ADOBE certification.

If you use pass4sureofficial 9A0-146 Certification questions and answers, you will experience actual 9A0-146 exam questions/answers. We know exactly what is needed and have all the exam preparation material required to pass the exam. Our ADOBE exam prep covers over 95% of the questions and answers that may be appeared in your 9A0-146 exam. Every point from pass4sure 9A0-146 PDF, 9A0-146 review will help you take ADOBE 9A0-146 exam much easier and become ADOBE certified. All the Questions/Answers are taken from real exams.

Here's what you can expect from the Pass4sureOfficial ADOBE 9A0-146 course:

- * Up-to-Date ADOBE 9A0-146 questions taken from the real exam.
- * 100% correct ADOBE 9A0-146 answers you simply can't find in other 9A0-146 courses.
- * All of our tests are easy to download. Your file will be saved as a 9A0-146 PDF.
- * ADOBE 9A0-146 brain dump free content featuring the real 9A0-146 test questions.

ADOBE 9A0-146 certification exam is of core importance both in your Professional life and ADOBE certification path. With ADOBE certification you can get a good job easily in the market and get on your path for success. Professionals who passed ADOBE 9A0-146 exam training are an absolute favorite in the industry. You will pass ADOBE 9A0-146 certification test and career opportunities will be open for you.



QUESTION: 1

Larry works as a Web designer for Ucweb Inc. He has been assigned the task of creating a new Web site using Dreamweaver CS4. Which of the following actions will he take to define a new site from the application bar?

- A. In the Site menu, select New Site.
- B. In the File menu, select New.
- C. In the Standard toolbar, select New.
- D. In the Site menu, select Manage sites.

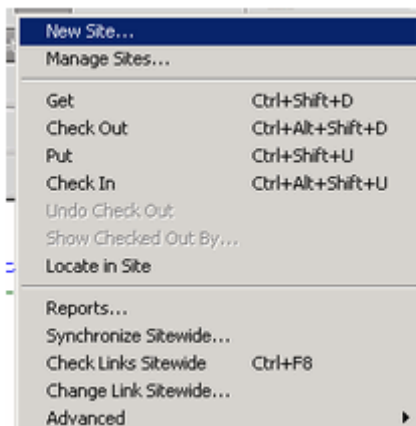
Answer: A

Explanation:

The Site menu option present in the Application bar provides the feature to create and define a new site in Dreamweaver CS4. Take the following steps to define a site:
1. Select the Site menu option present in the application bar to go to the New site option.



2. Click New Site in the drop down menu.



3. A new interface window, the Site Definition dialog box, appears where the name of the site is entered. As you will be working locally, entering an HTTP address is not necessary, so it may be left blank. Click the Next button.

Site Definition for larry example

Basic | Advanced

Site Definition

Editing Files | Testing Files | Sharing Files

A site, in Dreamweaver, is a collection of files and folders that corresponds to a website on a server.

What would you like to name your site?

Example: mySite

What is the HTTP Address (URL) of your site?

Example: <http://www.myHost.com/mySite>

If you want to work directly on the server using FTP or RDS, you should [create an FTP or RDS server connection](#). Working directly on the server does not allow you to perform site-wide operations like link checking or site reports.

< Back | Next > | Cancel | Help

4. You can use Dreamweaver to build web applications using any of the server technologies. ColdFusion, ASP.NET, ASP, JSP, or PHP. For now, click on the No, I don't want to use a server technology radio button.

Site Definition for larry example

Basic | Advanced

Site Definition

Editing Files, Part 2 | Testing Files | Sharing Files

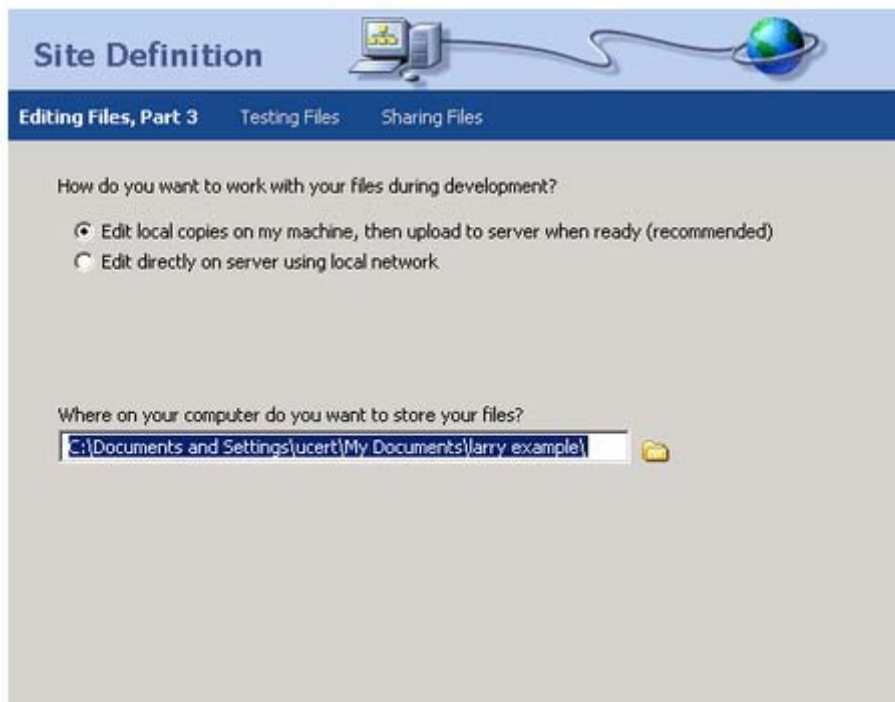
Do you want to work with a server technology such as ColdFusion, ASP.NET, ASP, JSP, or PHP?

No, I do not want to use a server technology.

Yes, I want to use a server technology.

< Back | Next > | Cancel | Help

5. Click on the first radio button if you want to edit the files on your machine.

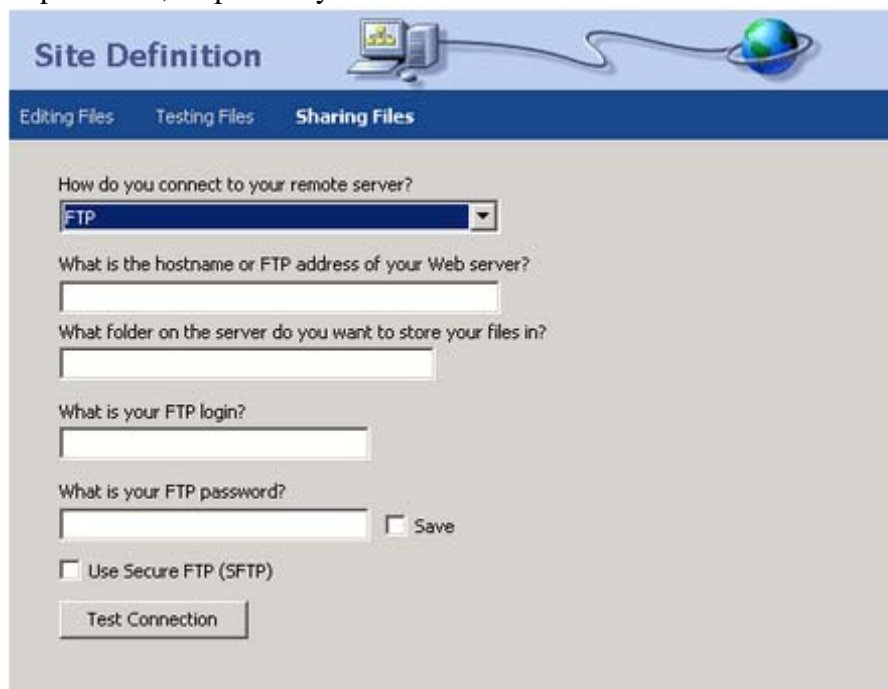


The screenshot shows the 'Site Definition' dialog box with the 'Editing Files, Part 3' tab selected. The title bar includes 'Site Definition' and icons of a computer and a globe. The main content area asks 'How do you want to work with your files during development?' with two radio buttons: 'Edit local copies on my machine, then upload to server when ready (recommended)' (selected) and 'Edit directly on server using local network'. Below this, it asks 'Where on your computer do you want to store your files?' with a text box containing 'C:\Documents and Settings\ucert\My Documents\larry example\'. A folder icon is visible to the right of the text box.

6. The additional fields for FTP address, folder location, login, and password appear in this dialog box. These fields are filled if you require to gain FTP access to a server.

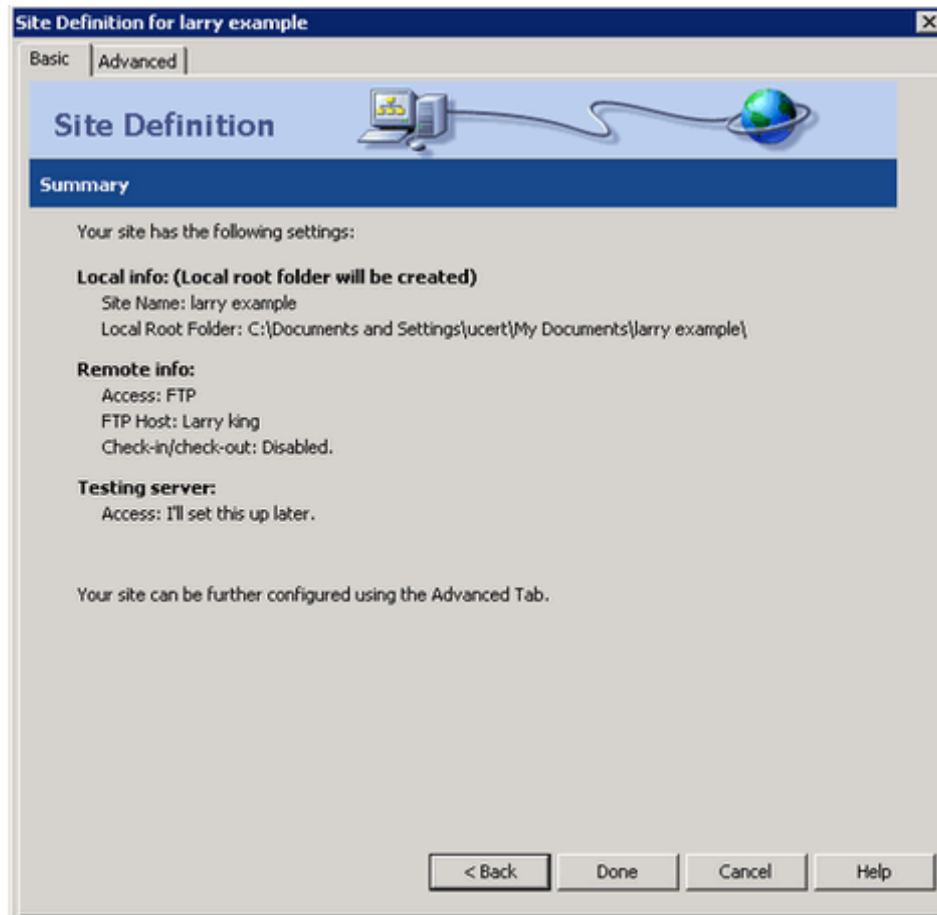
7. Fill the required entries, and click the Next button.

8. Check the Use Secure FTP (SFTP) and Save check boxes for security and to save the password, respectively.

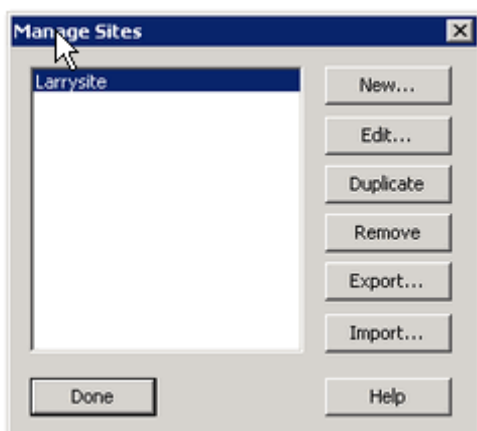


The screenshot shows the 'Site Definition' dialog box with the 'Sharing Files' tab selected. The title bar includes 'Site Definition' and icons of a computer and a globe. The main content area asks 'How do you connect to your remote server?' with a dropdown menu set to 'FTP'. Below this are four text boxes: 'What is the hostname or FTP address of your Web server?', 'What folder on the server do you want to store your files in?', 'What is your FTP login?', and 'What is your FTP password?'. To the right of the password box is a 'Save' checkbox. At the bottom, there is a 'Use Secure FTP (SFTP)' checkbox and a 'Test Connection' button.

9. Now you have completed the site definition process, using the Basic interface of the Site Definition wizard. This wizard shows you the entire summary of the site in the form of a site definition.



Answer: D is incorrect. This option is valid in the case of managing a site that has been already defined. There are different options present to manage sites. Larry can use this to manage his site after defining it. The image below shows the managing options present in the Managing Sites dialog box.



Answer: B is incorrect. This option is used to create new documents or pages for a web site. It cannot be used to create a site or to define it. Dreamweaver also includes tools like this to allow a user to create and test pages to ensure compatibility with most users. CSS layouts are designing features that can be employed using this tool.

Answer: C is incorrect. The New option in the Standard toolbar is an alternative way of creating new documents or web pages for a site.

QUESTION: 2

A user can create a toolbar in Dreamweaver by creating a file to define a toolbar and by placing the file in the Configuration/Toolbars folder. Which of the following files are used to create a toolbar? Each correct answer represents a complete solution. Choose all that apply.

- A. templatefile.xml
- B. newtoolbar.xml
- C. MyCommand.htm
- D. toolbars.xml

Answer: D, B, C

Explanation:

A user can create a toolbar in Dreamweaver by creating a file to define a toolbar, and by placing the file in the Configuration/Toolbars folder. The following files are used to create a toolbar in Dreamweaver: toolbars.xml. A user can edit this file to change the contents of the toolbar. newtoolbar.xml. A user can create this file to create a toolbar. imagefile.gif. This file contains the icon image for toolbar control. MyCommand.htm. This file is a command file associated with a toolbar item. Answer: A is incorrect. There is no file such as templatefile.xml.

QUESTION: 3

What will you do to change the name of a file in Dreamweaver?

- A. Go to the Site menu, click on New Site and then change the site name.
- B. In the Files panel, right click on the file, select New file and then enter a name.
- C. In the Files panel, right click on the file, then click on Edit and select Duplicate.
- D. In the Files panel, click on the file, pause, then click again and type the name.

Answer: D

Explanation:

A user can easily rename a file in the Files panel by clicking on it, pausing and again clicking. If the file is clicked without a pause then the file is opened in the Document window. A user can right-click (Windows) or Control-click (Macintosh) the file's icon, then select Edit > Rename. Then he can type the new name over the existing name. The Files panel is responsible for allowing a user to perform all the tasks related to the files associated with the site. It contains buttons to view and manage the files existing in the Remote and Local folders. The Files panel contains the following buttons:

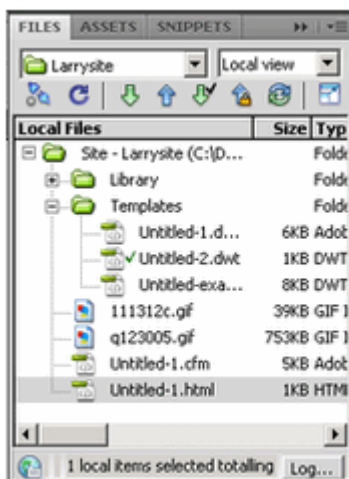
Put. This button is used to copy the files to the Remote site from the Local site.

Get. This button is used to copy the files to the Local site from the Remote site.

Synchronize. This button is used for synchronizing the files between the Remote and Local sites.

Check In. This button facilitates a user to unlock a file for other user to work on it while working in a collaborative environment.

Check out. This button facilitates a user to lock a file to work on it while working in a collaborative environment. The Files panel

**QUESTION: 4**

Mark works as a Site Engineer for ABC Inc. Mark has been assigned the task to make the Web page of the company's site heavy. Mark adds a number of links to other sites on the Web page. When one of the links is clicked, an error 404 is returned. The link shows the message of Server not found. Which of the following is the cause of the problem?

- A. The link to the site is an orphan link.
- B. The site is not valid for accessibility guidelines.
- C. The link to the site is an external link.
- D. The link to the site is a broken link.

Answer: D

Explanation:

When the server is not able to be located, error 404 is returned. A broken link, also known as a dead link, is a link on the World Wide Web that points to a web page or server that is permanently unavailable. The most common result of a dead link or broken link is a 404 error, which indicates that the web server processed the instructions, but the specific page could not be found. In Dreamweaver, the Broken Links report in the Link Checker panel shows the listing of the links that point to files which are not present within the local site. Answer: C is incorrect. The external links work fine if they are not broken. External links are the links that connect to outside web sites, pages, or files. Dreamweaver does not validate external links. Answer: A is incorrect. Orphan links are those links that are not connected to any other file or link in the whole Dreamweaver site. Answer: B is incorrect. Accessibility guidelines neither give an error nor make the server unavailable, if they are not validated for a Web site.

QUESTION: 5

Which of the following are attributes of the <TABLE> tag?

Each correct answer represents a complete solution. Choose three.

- A. WIDTH
- B. ALIGN
- C. TD
- D. BORDER

Answer: A, B, D

Explanation:

The WIDTH attribute of the <TABLE> tag is used to set the width of a table. Width can be specified in pixels and percentage. For example, if a table of the same width as that of the parent object has to be created, the WIDTH attribute must be set to 100%. The ALIGN attribute aligns the table within the text flow. By default alignment is set to left. The BORDER attribute of the <TABLE> tag is used to set the width of the table border. Answer: C is incorrect. <TD> is not an attribute of the <TABLE> tag. It is a tag used to specify cells in a table.

QUESTION: 6

Property inspector includes a panel menu. Which of the following basic commands are always available in the panel menu of Property Inspector? Each correct answer represents a complete solution. Choose all that apply.

- A. Rename Panel Group
- B. New Panel Group
- C. Close Panel Group

Pass4SureOfficial.com Lifetime Membership Features;

- Pass4SureOfficial Lifetime Membership Package includes over **2500** Exams.
- **All** exams Questions and Answers are included in package.
- **All** Audio Guides are included **free** in package.
- **All** Study Guides are included **free** in package.
- **Lifetime** login access.
- Unlimited download, no account expiry, no hidden charges, just one time \$99 payment.
- **Free updates** for Lifetime.
- **Free Download Access** to All new exams added in future.
- Accurate answers with explanations (If applicable).
- Verified answers researched by industry experts.
- Study Material **updated** on regular basis.
- Questions, Answers and Study Guides are downloadable in **PDF** format.
- Audio Exams are downloadable in **MP3** format.
- **No authorization** code required to open exam.
- **Portable** anywhere.
- 100% success **Guarantee**.
- **Fast**, helpful support 24x7.

View list of All exams (Q&A) downloads

<http://www.pass4sureofficial.com/allexams.asp>

View list of All Study Guides (SG) downloads

<http://www.pass4sureofficial.com/study-guides.asp>

View list of All Audio Exams (AE) downloads

<http://www.pass4sureofficial.com/audio-exams.asp>

Download All Exams Samples

<http://www.pass4sureofficial.com/samples.asp>

To purchase \$99 Lifetime Full Access Membership click here

<http://www.pass4sureofficial.com/purchase.asp>

3COM	CompTIA	Filemaker	IBM	LPI	OMG	Sun
ADOBE	ComputerAssociates	Fortinet	IISFA	McAfee	Oracle	Sybase
APC	CWNP	Foundry	Intel	McData	PMI	Symantec
Apple	DELL	Fujitsu	ISACA	Microsoft	Polycom	TeraData
BEA	ECCouncil	GuidanceSoftware	ISC2	Mile2	RedHat	TIA
BICSI	EMC	HDI	ISEB	NetworkAppliance	Sair	Tibco
CheckPoint	Enterasys	Hitachi	ISM	Network-General	SASInstitute	TruSecure
Cisco	ExamExpress	HP	Juniper	Nokia	SCP	Veritas
Citrix	Exin	Huawei	Legato	Nortel	See-Beyond	Vmware
CIW	ExtremeNetworks	Hyperion	Lotus	Novell	SNIA	

