

1D0-541

CIW

CIW v5 Database Design Specialist

Visit: <http://www.pass4sureofficial.com/exams.asp?examcode=1D0-541>

Pass4sureofficial.com is a reputable IT certification examination guide, study guides and audio exam provider, we not only ensure that you pass your 1D0-541 exam in first attempt, but also you can get a high score to acquire CIW certification.

If you use pass4sureofficial 1D0-541 Certification questions and answers, you will experience actual 1D0-541 exam questions/answers. We know exactly what is needed and have all the exam preparation material required to pass the exam. Our CIW exam prep covers over 95% of the questions and answers that may be appeared in your 1D0-541 exam. Every point from pass4sure 1D0-541 PDF, 1D0-541 review will help you take CIW 1D0-541 exam much easier and become CIW certified. All the Questions/Answers are taken from real exams.

Here's what you can expect from the Pass4sureOfficial CIW 1D0-541 course:

- * Up-to-Date CIW 1D0-541 questions taken from the real exam.
- * 100% correct CIW 1D0-541 answers you simply can't find in other 1D0-541 courses.
- * All of our tests are easy to download. Your file will be saved as a 1D0-541 PDF.
- * CIW 1D0-541 brain dump free content featuring the real 1D0-541 test questions.

CIW 1D0-541 certification exam is of core importance both in your Professional life and CIW certification path. With CIW certification you can get a good job easily in the market and get on your path for success. Professionals who passed CIW 1D0-541 exam training are an absolute favorite in the industry. You will pass CIW 1D0-541 certification test and career opportunities will be open for you.



QUESTION: 1

With regard to databases, what is normalization?

- A. The process of reducing the cardinality of a relation
- B. The process of organizing and refining relations
- C. The process of duplicating data to reduce the number of tables
- D. The process of limiting data stored in a table to a specific range of values

Answer: B

QUESTION: 2

Which three pieces of information did E.F. Codd describe as necessary to retrieve a data value from a relational database?

- A. Attribute, domain, and tuple
- B. Entity, relation name, and domain
- C. Table name, primary key, and entity
- D. Attribute, relation name, and primary key

Answer: D

QUESTION: 3

What is a virtual table?

- A. A virtual table is a relation created as the result of data manipulation; it exists only in computer memory, and is not a permanent part of the database.
- B. A virtual table is a relation stored in the database; it is used when multiple users access the same relation in a database.
- C. A virtual table is a relation derived from the database data dictionary; it contains metadata about a base relation. A virtual table is a relation derived from the database? data dictionary; it contains metadata about a base relation.
- D. A virtual table is a relation that consists of primary and foreign keys for a particular set of relations in a database.

Answer: A

QUESTION: 4

Your enterprise has reached the conceptual design phase for a database project. What is the desired goal at the end of this design phase?

- A. A set of normalized relations
- B. A reviewed entity-relationship (ER) model
- C. An entity-relationship (ER) model with no redundant data
- D. A set of denormalized relations

Answer: B

QUESTION: 5

In which phase of database design do you identify entities, attribute domains, and relationships?

- A. Logical
- B. Physical
- C. Application
- D. Conceptual

Answer: D

QUESTION: 6

Consider the Dept1_Parts and Dept2_Parts relations shown in the exhibit. Which of the following SQL statements would create a set difference of the two relations with the widest variety of Structured Query Language dialects?

Part_ID	Part_Name	Description	Supp_ID
0312	bolt	hexagon bolt	221
0322	screw	capscrew	441
0332	socket screw	button head	551
0342	flange	blind flange	331
0352	socket screw	countersunk	441

Dept1_Parts Relation

Part_ID	Part_Name	Description	Supp_ID
0302	flange	slip-on flange	331
0322	screw	capscrew	441
0332	socket screw	button head	551
0362	bolt	studbolt	441

Dept2_Parts Relation

- A. SELECT * FROM
Dept1_Parts
EXCEPT(SELECT
Part_ID FROM
Dept2_Parts);
- B. SELECT * FROM
Dept1_Parts MINUS
(SELECT Part_ID
FROM Dept2_Parts);
- C. SELECT * FROM
Dept1_Parts
DIFFERENCE
(SELECT Part_ID
FROM Dept2_Parts);
- D. SELECT * FROM
Dept1_Parts WHERE
Part_ID NOT IN
(SELECT Part_ID FROM
Dept2_Parts);

Answer: D

QUESTION: 7

Consider the Information Engineering diagram shown in the exhibit. Building_ID, R_ID, Room_Count and Room_Num are integer numbers, whereas Bldg_Name, Location and Res_Name are all represented by variable-length strings with a maximum of 20 characters. Which SQL statement best implements the RESIDENT relation shown in this diagram?



- A.CREATE TABLE RESIDENT (
R_ID INTEGER NULL PRIMARY KEY, Room_Num FLOAT,
Res_Name VARCHAR, Building_ID INTEGER NULL,
FOREIGN KEY Building_ID REFERENCES BUILDING (Building_ID));
- B.CREATE TABLE RESIDENT (
R_ID INTEGER NOT NULL PRIMARY KEY, Room_Num BINARY,
Res_Name VARCHAR (20), Building_ID INTEGER NOT NULL,
FOREIGN KEY Building_ID REFERENCES BUILDING (Building_ID));
- C.CREATE TABLE RESIDENT (
R_ID INTEGER NOT NULL PRIMARY KEY, Room_Num INTEGER,
Res_Name VARCHAR (20), Building_ID INTEGER NOT NULL);
- D.CREATE TABLE RESIDENT (
R_ID INTEGER NOT NULL PRIMARY KEY,
Room_Num INTEGER, Res_Name VARCHAR (20),
Building_ID INTEGER NOT NULL,
FOREIGN KEY Building_ID REFERENCES BUILDING (Building_ID));

Answer: D

QUESTION: 8

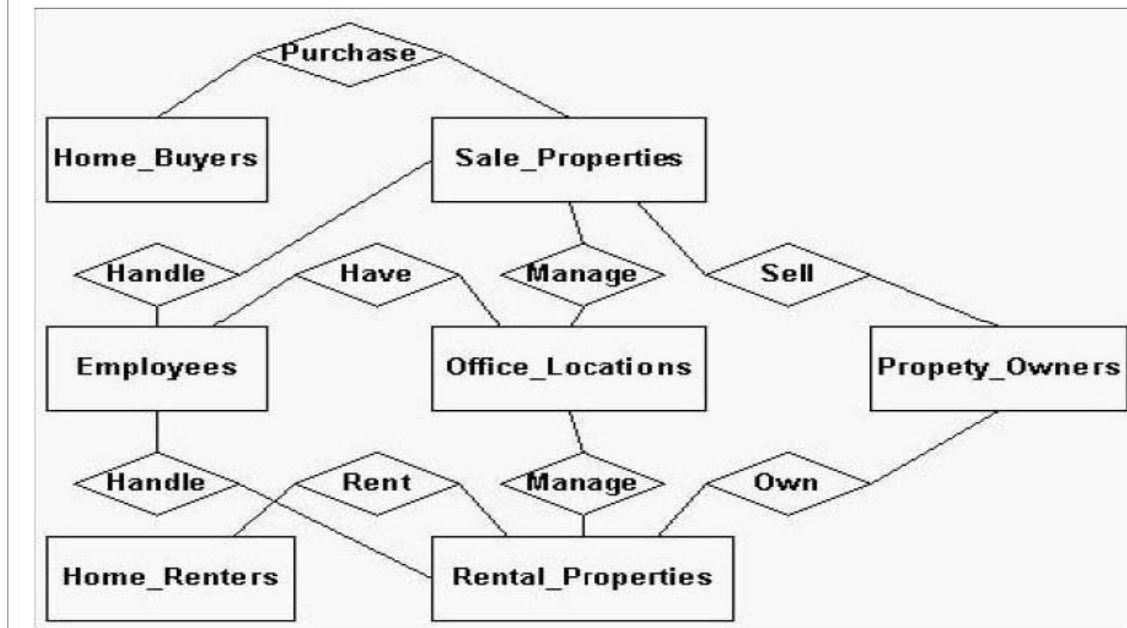
Which term describes one or more database operations that are executed as a single unit?

- A. Update
- B. Transaction
- C. Encapsulation
- D. Operational group

Answer: B

QUESTION: 9

Your enterprise is involved in planning a database project. The exhibit shows the result of one phase of the database design life cycle. Which term best describes the diagram shown in the exhibit?



- A. Information Engineering (IE) data model
- B. Corporate data model
- C. Database requirements model
- D. ERD model

Answer: B

QUESTION: 10

Pass4SureOfficial.com Lifetime Membership Features;

- Pass4SureOfficial Lifetime Membership Package includes over **2500** Exams.
- **All** exams Questions and Answers are included in package.
- **All** Audio Guides are included **free** in package.
- **All** Study Guides are included **free** in package.
- **Lifetime** login access.
- Unlimited download, no account expiry, no hidden charges, just one time \$99 payment.
- **Free updates** for Lifetime.
- **Free Download Access** to All new exams added in future.
- Accurate answers with explanations (If applicable).
- Verified answers researched by industry experts.
- Study Material **updated** on regular basis.
- Questions, Answers and Study Guides are downloadable in **PDF** format.
- Audio Exams are downloadable in **MP3** format.
- **No authorization** code required to open exam.
- **Portable** anywhere.
- 100% success **Guarantee**.
- **Fast**, helpful support 24x7.

View list of All exams (Q&A) downloads

<http://www.pass4sureofficial.com/allexams.asp>

View list of All Study Guides (SG) downloads

<http://www.pass4sureofficial.com/study-guides.asp>

View list of All Audio Exams (AE) downloads

<http://www.pass4sureofficial.com/audio-exams.asp>

Download All Exams Samples

<http://www.pass4sureofficial.com/samples.asp>

To purchase \$99 Lifetime Full Access Membership click here

<http://www.pass4sureofficial.com/purchase.asp>

3COM	CompTIA	Filemaker	IBM	LPI	OMG	Sun
ADOBE	ComputerAssociates	Fortinet	IISFA	McAfee	Oracle	Sybase
APC	CWNP	Foundry	Intel	McData	PMI	Symantec
Apple	DELL	Fujitsu	ISACA	Microsoft	Polycom	TeraData
BEA	ECCouncil	GuidanceSoftware	ISC2	Mile2	RedHat	TIA
BICSI	EMC	HDI	ISEB	NetworkAppliance	Sair	Tibco
CheckPoint	Enterasys	Hitachi	ISM	Network-General	SASInstitute	TruSecure
Cisco	ExamExpress	HP	Juniper	Nokia	SCP	Veritas
Citrix	Exin	Huawei	Legato	Nortel	See-Beyond	Vmware
CIW	ExtremeNetworks	Hyperion	Lotus	Novell	SNIA	

