

640-461

Cisco

Introducing Cisco Voice and Unified Communications Administration v8.0

Visit: <http://www.pass4sureofficial.com/exams.asp?examcode=640-461>

Pass4sureofficial.com is a reputable IT certification examination guide, study guides and audio exam provider, we not only ensure that you pass your 640-461 exam in first attempt, but also you can get a high score to acquire Cisco certification.

If you use pass4sureofficial 640-461 Certification questions and answers, you will experience actual 640-461 exam questions/answers. We know exactly what is needed and have all the exam preparation material required to pass the exam. Our Cisco exam prep covers over 95% of the questions and answers that may be appeared in your 640-461 exam. Every point from pass4sure 640-461 PDF, 640-461 review will help you take Cisco 640-461 exam much easier and become Cisco certified. All the Questions/Answers are taken from real exams.

Here's what you can expect from the Pass4sureOfficial Cisco 640-461 course:

- * Up-to-Date Cisco 640-461 questions taken from the real exam.
- * 100% correct Cisco 640-461 answers you simply can't find in other 640-461 courses.
- * All of our tests are easy to download. Your file will be saved as a 640-461 PDF.
- * Cisco 640-461 brain dump free content featuring the real 640-461 test questions.

Cisco 640-461 certification exam is of core importance both in your Professional life and Cisco certification path. With Cisco certification you can get a good job easily in the market and get on your path for success. Professionals who passed Cisco 640-461 exam training are an absolute favorite in the industry. You will pass Cisco 640-461 certification test and career opportunities will be open for you.



QUESTION: 1

Which two options are features in Cisco Unified Presence? (Choose two.)

- A. IP Phone Messenger
- B. Native Presence
- C. BLF speed-dial
- D. Enterprise Instant Messaging
- E. BLF speed-dial pickup

Answer: B, D

QUESTION: 2

An end user reports that they are unable to control their Cisco IP phone using Cisco Unified Personal Communicator and cannot make any calls. Which situation can cause this issue?

- A. The Cisco Unified Personal Communicator is not registered in the Cisco Unified Presence server.
- B. The LDAP integration is incorrect.
- C. The Cisco Unified Personal Communicator is configured in desk-phone mode.
- D. The Allow Control of Device from CTI checkbox in the device configuration on Cisco Unified Communications Manager is disabled.
- E. The Allow Control of Device from CTI checkbox in the device configuration on the Cisco Unified Presence is disabled.

Answer: D

Incorrect Answer:

ABC Link :

http://www.cisco.com/en/US/docs/voice_ip_comm/cups/8_0/english/install_upgrade/deployment/guide/dgclient.html

QUESTION: 3

Which description describes the low latency queuing algorithm?

- A. Empty queue 1. If queue 1 is empty, empty queue 2, then empty queue 3, unless a packet for a higher queue arrives.
- B. An administrator defines the traffic classes based on match criteria, including protocols, access control lists, and input interfaces.

C. A flow-based algorithm that simultaneously schedules interactive traffic to the front of a queue to reduce response time and fairly shares the remaining bandwidth among high-bandwidth flows.

D. This feature brings strict priority queuing to CBWFQ.

E. Packets are placed into a single queue and serviced in the order they were received.

Answer: D

Incorrect Answer:

ABC

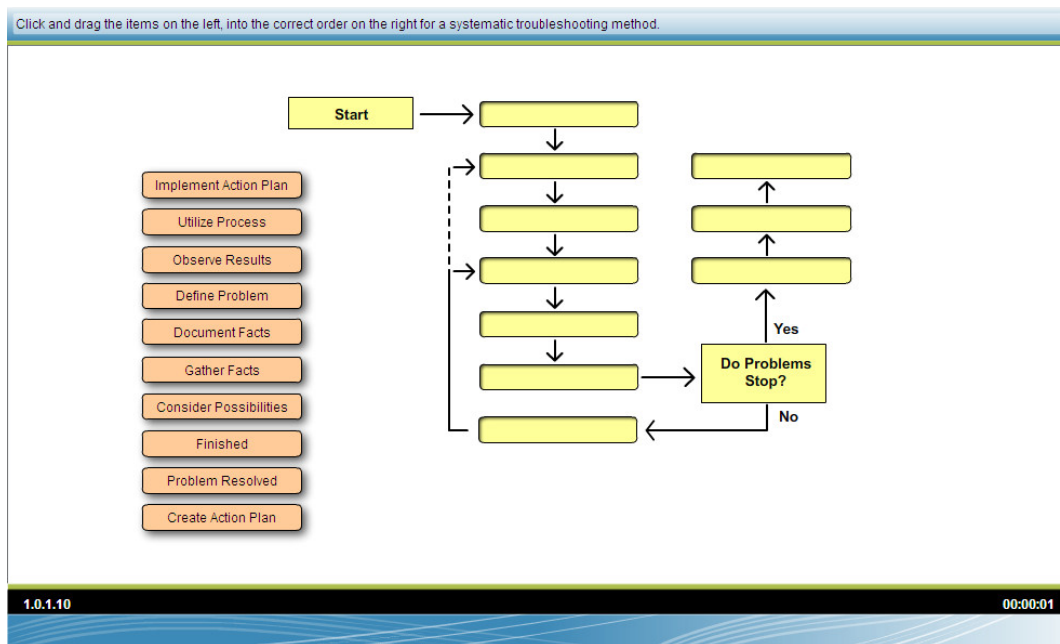
A & C denotes to weighted fair queue or DWFQ. B denotes to CBWFQ (class based weighted fair queue).

Link:

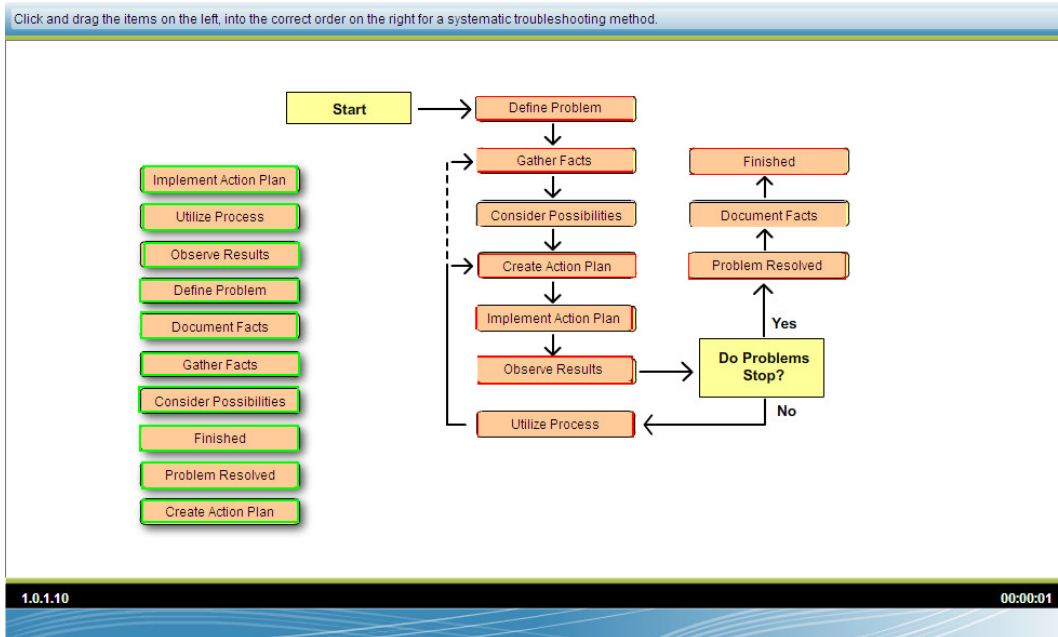
http://www.cisco.com/en/US/docs/ios/12_1/qos/configuration/guide/qcdconmg.html#wp1001019

QUESTION: 4

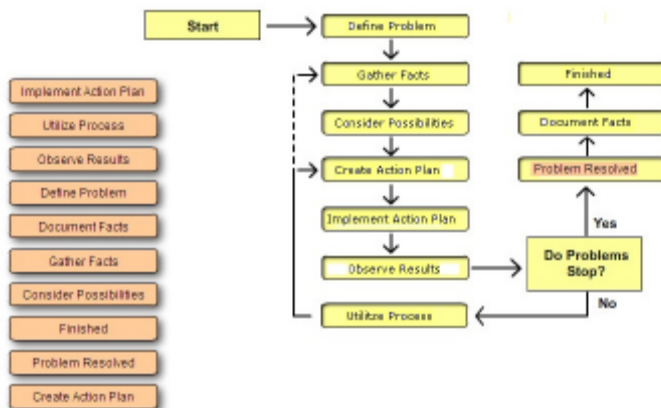
DRAG DROP



Answer:



Explanation:



QUESTION: 5

An administrator wants to locate and remove all unassigned directory numbers on the Cisco Unified Communications Manager system. Which method is the best method to accomplish this task?

- Choose Device > Phone. Search all phones and remove the undesired directory numbers.
- Use the Dial Plan Installer to remove the directory numbers.
- Use the Disaster Recovery System to restore only valid directory numbers.
- Choose Call Routing > Route Plan Report, choose the Unassigned DN drop-down menu, and then remove all orphaned directory numbers.
- Choose Device > Device Settings > Device Defaults and use the wizard to locate and remove the orphaned directory numbers.

Answer: D

Incorrect Answer:

ABCE

A. Assigned phone could be deleted from device>phone option.

E. Device defaults are used to updating devices.

Link:

http://www.cisco.com/en/US/docs/voice_ip_comm/cucm/admin/8_5_1/ccmcf/b03rtrep.html#wp1024696

QUESTION: 6

When troubleshooting a phone that is unable to get an IP address from a DHCP server, what is the first thing to check for on the phone?

- A. Make sure that DHCP Enabled is disabled on the phone.
- B. Make sure that the phone is getting the proper VLAN information.
- C. Make sure that the TFTP server address is correct on the phone.
- D. Make sure that the DHCP scope has enough addresses left in the range.
- E. Make sure the phone has the correct phone load ID.

Answer: B

Incorrect Answer:

ACDE

IP phones rely on a TFTP-based process to acquire configuration files, software images, and other endpoint-specific information. The Cisco TFTP service is a file serving system that can run on one or more Unified CM servers.

Link:

http://www.cisco.com/en/US/docs/voice_ip_comm/cucm/srnd/8x/netstruc.html#wp1185040

QUESTION: 7

Which issue does CAS signaling on a T1 circuit create?

- A. Signaling bits are subtracted from each frame, which causes a significant loss of voice quality.
- B. An extra signaling bit is added to the sixth frame to carry signaling information.
- C. A signaling bit is subtracted from every sixth frame to carry signaling information.
- D. Signaling bits are added to the signaling stream to create extended super frames.

Answer: C

Incorrect Answer:

ABD

Each T1 channel carries a sequence of frames. These frames consist of 192 bits and an additional bit designated as the framing bit, for a total of 193 bits per frame. Super Frame (SF) groups twelve of these 193 bit frames together and designates the framing bits of the even numbered frames as signaling bits. CAS looks specifically at every sixth frame for the timeslot's or channel's associated signaling information

Link:

http://www.cisco.com/en/US/tech/tk652/tk653/technologies_tech_note09186a00800e2560.shtml

QUESTION: 8

How does the Cisco Unified Communications Manager Express match an outbound VoIP dial peer?

- A. Outbound dial-peer matching uses the entire string of digits en bloc to match the dial peer with the longest match.
- B. Outbound dial-peer matching is completed on a digit-by-digit basis.
- C. It matches outbound dial peers by placing all the dial peers into a hunt group and then uses the entire dialed number en bloc to match the first dial peer.
- D. Cisco Unified Communications Manager Express creates a hunt group that contains all the configured dial peers and then applies the dial digits in a digit-by-digit manner to match a dial peer.

Answer: A

Incorrect Answer:

BCD

When a router receives a voice call, it selects an outbound dial peer by comparing the called number (the full E.164 telephone number) in the call information with the number configured as the destination pattern for the POTS dial peer. The router then strips out the left-justified numbers corresponding to the destination pattern matching the called number. If you have configured a prefix, the prefix will be put in front of the remaining numbers, creating a dial string, which the router will then dial. If all numbers in the destination pattern are stripped-out, the user will receive (depending on the attached equipment) a dial tone.

QUESTION: 9

In which situation are user PINs maintained by the local Cisco Unified Communications servers?

- A. Only when the system is using LDAP synchronization.
- B. Only when the system is using LDAP authentication.
- C. Only when the system is using Global Directory.
- D. PINs are always maintained by the local Cisco Unified Communications Manager servers
- E. PINs are never maintained by the local Cisco Unified Communications Manager servers.

Answer: D

Incorrect Answer:

ABC

Cisco Unified Communications Manager assigns the system Default Credential Policy to end user passwords, end user PINS, and application user passwords

Link:

http://docwiki.cisco.com/wiki/Cisco_Unified_MeetingPlace_Release_8.0_-_Configuring_Cisco_Unified_MeetingPlace_Directory_Service#Configuring_the_User_PIN_in_Cisco_Unified_Communications_Manager

QUESTION: 10

An IP phone has a line calling search space and a device calling search space. If a call is made from the IP phone, which calling search space is used?

- A. Neither calling search space is used.
- B. The line calling search space takes precedence and is used.
- C. The device calling search space takes precedence and is used.
- D. The line and device calling search spaces are combined and the line calling search space has precedence.

Answer: D

Incorrect Answer:

ABC

If you configure a calling search space both on an IP phone line and on the device (IP phone) itself, Cisco Unified Communications Manager concatenates the two calling search spaces and places the line calling search space in front of the device calling search space

Link:

http://www.cisco.com/en/US/docs/voice_ip_comm/cucm/admin/8_0_2/ccmsys/a03ptcss.html

Pass4SureOfficial.com Lifetime Membership Features;

- Pass4SureOfficial Lifetime Membership Package includes over **2500** Exams.
- **All** exams Questions and Answers are included in package.
- **All** Audio Guides are included **free** in package.
- **All** Study Guides are included **free** in package.
- **Lifetime** login access.
- Unlimited download, no account expiry, no hidden charges, just one time \$99 payment.
- **Free updates** for Lifetime.
- **Free Download Access** to All new exams added in future.
- Accurate answers with explanations (If applicable).
- Verified answers researched by industry experts.
- Study Material **updated** on regular basis.
- Questions, Answers and Study Guides are downloadable in **PDF** format.
- Audio Exams are downloadable in **MP3** format.
- **No authorization** code required to open exam.
- **Portable** anywhere.
- 100% success **Guarantee**.
- **Fast**, helpful support 24x7.

View list of All exams (Q&A) downloads

<http://www.pass4sureofficial.com/allexams.asp>

View list of All Study Guides (SG) downloads

<http://www.pass4sureofficial.com/study-guides.asp>

View list of All Audio Exams (AE) downloads

<http://www.pass4sureofficial.com/audio-exams.asp>

Download All Exams Samples

<http://www.pass4sureofficial.com/samples.asp>

To purchase \$99 Lifetime Full Access Membership click here

<http://www.pass4sureofficial.com/purchase.asp>

3COM	CompTIA	Filemaker	IBM	LPI	OMG	Sun
ADOBE	ComputerAssociates	Fortinet	IISFA	McAfee	Oracle	Sybase
APC	CWNP	Foundry	Intel	McData	PMI	Symantec
Apple	DELL	Fujitsu	ISACA	Microsoft	Polycom	TeraData
BEA	ECCouncil	GuidanceSoftware	ISC2	Mile2	RedHat	TIA
BICSI	EMC	HDI	ISEB	NetworkAppliance	Sair	Tibco
CheckPoint	Enterasys	Hitachi	ISM	Network-General	SASInstitute	TruSecure
Cisco	ExamExpress	HP	Juniper	Nokia	SCP	Veritas
Citrix	Exin	Huawei	Legato	Nortel	See-Beyond	Vmware
CIW	ExtremeNetworks	Hyperion	Lotus	Novell	SNIA	

